

Prepared for:
Bloom Energy

Prepared By:
Ramboll Americas Engineering Solutions, Inc.

Date
April 2026

EVALUATION OF AIR EMISSIONS FROM PROPOSED FUEL CELL INSTALLATION

**BLOOM ENERGY
HILLIARD, OH**

TABLE OF CONTENTS

1.	Facility and Technology Overview	2
2.	Background on Greenhouse Gas Emissions	4
2.1	Greenhouse Gas Emissions	4
2.2	What is Carbon Dioxide?	4
2.3	How is Carbon Dioxide Regulated?	5
2.4	What are the Health Effects of Carbon Dioxide?	5
3.	Air Quality Impact Analysis	6
3.1	Air Dispersion Modeling	6
3.2	Modeling Methodology	6
3.3	Model-Predicted CO ₂ Impacts	8
3.4	CO ₂ Emissions in Context	11
4.	Conclusions	11

1. FACILITY AND TECHNOLOGY OVERVIEW

AEP Ohio is installing a 72.9-Megawatt (MW) Fuel Cell facility at 4120 Scioto Darby Creek Road in Hilliard, Ohio. The facility will supply energy to the new Amazon Web Services (AWS) Data Center currently under construction adjacent to the fuel cell facility along Scioto Darby Creek Road. The fuel cells to be installed are manufactured by Bloom Energy.

Unlike traditional sources of energy generation such as engines or turbines, Bloom Energy's solid oxide fuel cells produce electricity without fuel combustion. Instead, fuel cells generate power by extracting hydrogen from natural gas, which passes through a solid material called an electrolyte. An electrolyte is able to conduct ions, which are atoms with positive and negative charge. This positive or negative charge is created when the ions lose or gain electrons. As the electrons are separated, an electrical current is created and thus power generation. This process is shown below in **Figure 1**. The solid oxide fuel cells are stacked on top of each other to form a fuel cell stack. These stacks are combined into a power module which is the building block of the energy servers.

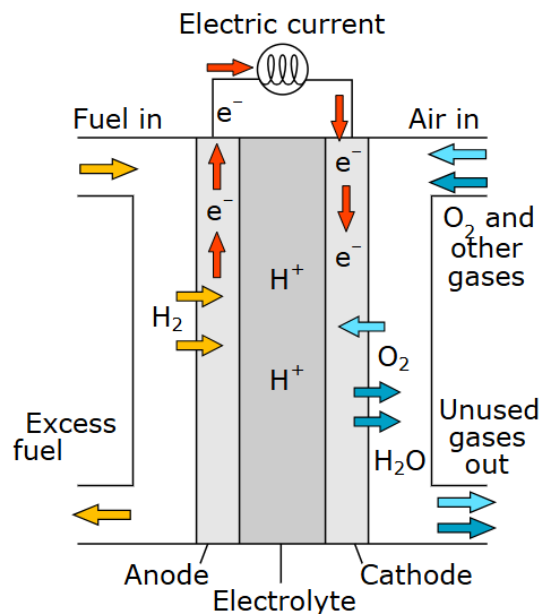


Figure 1: Fuel Cell Schematic

The construction and operation of the proposed fuel cell facility was authorized by Ohio Environmental Protection Agency (Ohio EPA) through an air permit-to-install and operate (PTIO). Total emissions for all pollutants are below Ohio EPA Significant Emission Rates (SER) and major New Source Review (NSR) thresholds. Based on projected emissions, the facility is exempt from the requirement to conduct an ambient air quality analysis per Ohio EPA's established modeling thresholds.¹ Although the fuel cell facility is not required to assess potential ambient air quality impacts from carbon dioxide (CO₂) to satisfy any regulatory requirement, AEP and Bloom have elected to conduct a dispersion modeling analysis in order

¹ https://dam.assets.ohio.gov/image/upload/epa.ohio.gov/Portals/27/engineer/eguides/EG69_11-14-18_final.pdf

to put CO₂ emissions from the proposed Hilliard fuel cell installation in context and address questions raised by the community.

As discussed within this report, the air emissions from the proposed fuel cell facility do not represent a cause for concern to the Hilliard community in the vicinity of the project site. In providing power to the local area, the project would displace conventional electric generation sources and reduce the emissions of compounds that would otherwise be emitted if the necessary power was generated by combustion.

2. BACKGROUND ON GREENHOUSE GAS EMISSIONS

2.1 Greenhouse Gas Emissions

The primary Greenhouse Gas (GHG) is CO₂, and emissions of GHG are commonly reported in units of CO₂-equivalents, or CO₂e. When performing calculations, emissions of each GHG are multiplied by their Global Warming Potentials (GWP) to determine CO₂e emissions. GHG emissions do not have known local impacts, health or otherwise, as detailed in **Section 2.4** below.

2.2 What is Carbon Dioxide?

CO₂ is a compound made up of one carbon atom and two oxygen atoms. It plays a large role in many biogenic processes but is also a result of many anthropogenic processes. Biogenic CO₂ is CO₂ which comes from living organisms like plants and animals and naturally cycles through the atmosphere back to living organisms. Anthropogenic CO₂ comes from human activities like burning fuel for power. An excess of CO₂ in the atmosphere intensifies the greenhouse gas effect, trapping more heat and contributing to global climate change. CO₂ is a byproduct of the power generation process in the fuel cell, which breaks natural gas (which is predominantly methane [CH₄]) down into Hydrogen (H₂) and CO₂.

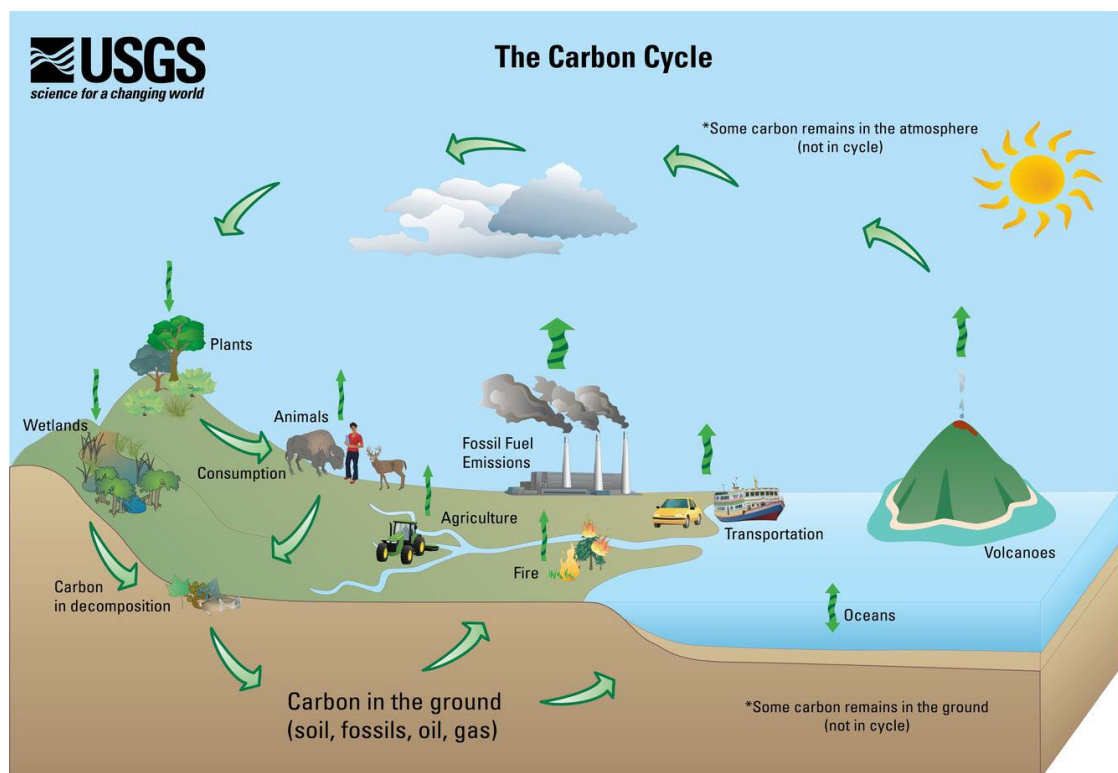


Figure 2: Carbon Cycle.²

² <https://www.usgs.gov/media/images/usgs-carbon-cycle>

2.3 How is Carbon Dioxide Regulated?

Federal

At the Federal level, the United States EPA (USEPA) has enacted limited regulations of GHGs, which include GHG reporting for specific sectors, the phase-out and banning of high GWP compounds (e.g., refrigerants), and GHG permitting for certain industrial facilities. Under the Clean Air Act, which is the source of federal authority to regulate air emissions, permitting is only required for “major sources” of GHGs. To be considered a “major source” for GHGs, a source must first be a major source for one or more other regulated pollutants, and must also emit over 75,000 tons per year of CO₂e³

The Occupational Safety and Health Administration (OSHA) sets and enforces standards to keep workers safe and healthy. It covers most private sector and public sector employers. OSHA has published a permissible exposure limit (PEL), 8-hour timeweighted average (TWA) of 5,000 parts per million (ppm).⁴ A PEL is the maximum concentration of a substance allowed in workplace air.

State

At the State level, Ohio EPA implements the requirements of the federal Clean Air Act through permits, which include regulation of GHGs for major sources, as defined above.

2.4 What are the Health Effects of Carbon Dioxide?

Potential Health Effects of CO₂

USEPA has not adopted a health-based standard for CO₂ concentrations in ambient air (outdoor air), and to our knowledge, neither have any States or local jurisdictions. USEPA has not established a National Ambient Air Quality Standard (NAAQS) for CO₂,⁵ and USEPA’s Integrated Risk Information System (IRIS) does not contain any toxicity information on CO₂.⁶ In general, CO₂ is not considered a health concern by relevant regulatory bodies or at typical levels found in ambient air (typically around 350-450 ppm) irrespective of what sources are present. As noted above, OSHA has established a PEL of 5,000 ppm on an 8-hour TWA basis.

Due to wind flow patterns and dispersion characteristics, CO₂ in outdoor air dissipates within relatively short distances as seen in the results of the dispersion modeling in **Section 3.3**. We are not aware of any regulatory bodies (Federal, state, or local) monitoring CO₂ for the purpose of assessing health impacts.

³ <https://www.epa.gov/sites/default/files/2015-12/documents/20140724memo.pdf> and <https://www.federalregister.gov/documents/2010/06/03/2010-11974/prevention-of-significant-deterioration-and-title-v-greenhouse-gas-tailoring-rule>

⁴ <https://www.osha.gov/chemicaldata/183>

⁵ <https://www.epa.gov/criteria-air-pollutants/naaqs-table>

⁶ <https://iris.epa.gov/AtoZ/alt/alpha/>

3. AIR QUALITY IMPACT ANALYSIS

3.1 Air Dispersion Modeling

Air dispersion is the distribution of an air pollutant emitted from a source. Dispersion can be impacted by source exit parameters, meteorological conditions, and surrounding features (e.g., buildings, terrain). The goal of air dispersion modeling is to be able to predict the dispersion of these air pollutants to quantify the impact that an emissions source may have on the surrounding air quality.

AERMOD is a dispersion modeling software by the USEPA that can be used for State Implementation Plans (SIPs)⁷ and federal programs. It is the USEPA's preferred model for near-field impacts (up to 50 kilometers [km]).⁸ Ohio EPA also uses AERMOD.⁹ AERMOD is a steady-state plume model based on gaussian dispersion. This means that an emissions plume is assumed to disperse along a straight line, and pollutant concentration predictions are made using normal probability distribution. The predicted concentration by AERMOD is based on these principles and considers the meteorological conditions, surrounding features, and source exit parameters.

The source exit parameters and building information come from site-specific information, whereas the meteorological data and terrain information come from external data sources which have been approved by the USEPA. Ohio EPA maintains recent five-year National Weather Station (NWS) data sets for meteorological input into AERMOD. National Elevation Data (NED) from the United States Geological Survey (USGS) is used for the proposed project location and surrounding area. This data is then compiled by the modeling program to predict the concentrations of air pollutants at specified locations called receptors.¹⁰

3.2 Modeling Methodology

Ramboll modeled the impacts of CO₂ emissions from the fuel cell facility using AERMOD. The fuel cell facility was digitized using general arrangement drawings of the site. Each power module was treated as an individual point source with identical exhaust parameters and emission rates. There is a total of 1,394 power modules on site that make up the 22 groups of Energy Servers. The stack parameters used in the model are provided in **Table 1**. The modeled locations of each power module are in **Attachment 1**.

⁷ A SIP is the state's federally approved collection of laws and regulations designed to implement the requirements of the Clean Air Act.

⁸ https://www.epa.gov/system/files/documents/2024-11/appendix_w-2024.pdf

⁹ https://dam.assets.ohio.gov/image/upload/epa.ohio.gov/Portals/27/engineer/equides/EG69_11-14-18_final.pdf

¹⁰ https://gaftp.epa.gov/Air/aqmg/SCRAM/models/related/aermap/aermap_userguide.pdf

Table 1. Fuel Cell Modeled Stack Parameters

Source ID	Source Type	Stack Height (m)	Stack Diameter (m)	Stack Velocity (m/s)	Stack Temperature (K)
STCK1 – STCK1394	POINT	2.06	0.35	2.2	419

Gaussian models such as AERMOD are linear with respect to emission rates. Therefore, each power module was modeled with a one gram per second emission rate, and the results were scaled by the actual emission rate of CO₂ from the facility, which are provided in **Table 2**. This approach is consistent with the modeling methodology outlined by Ohio EPA in Engineering Guideline 69.¹¹

Table 2. Facility CO₂ Emission Rate

Facility-Wide	Emission Rate (TPY)	Emission Rate (lb/hr)
72.91 MW	265,979	60,726

Ohio EPA outlines which meteorological data should be used in a modeling demonstration based on what County an applicant’s project is located in. The meteorological data for Franklin County was obtained from Ohio EPA’s website.¹² The use of a five-year meteorological data set is consistent with US EPA’s Guideline on Air Quality Models.¹³

The elevation data was downloaded from the USGS website for the site and the surrounding receptors.¹⁴ The elevation data is summarized in **Attachment 1**. Four receptor locations were analyzed to represent the nearby communities. These four specified locations were in the Darby Creek Subdivision and Beacon Subdivision, and at Beacon Elementary School and Darby Creek Elementary School. Fenceline receptors were also analyzed for short term nearfield impacts. In general, receptors within a secured property line where public access can be precluded are not required to be assessed by Ohio EPA when determining ambient air quality impacts. The locations of receptors relative to the fuel cell facility are shown **Figure 3** below.

¹¹ https://dam.assets.ohio.gov/image/upload/epa.ohio.gov/Portals/27/engineer/eguides/EG69_11-14-18_final.pdf

¹² <https://epa.ohio.gov/divisions-and-offices/air-pollution-control/reports-and-data/aermet-output-files-for-aermod-model-input>

¹³ https://www.epa.gov/system/files/documents/2024-11/appendix_w-2024.pdf

¹⁴ <https://www.usgs.gov/programs/national-geospatial-program/national-map>

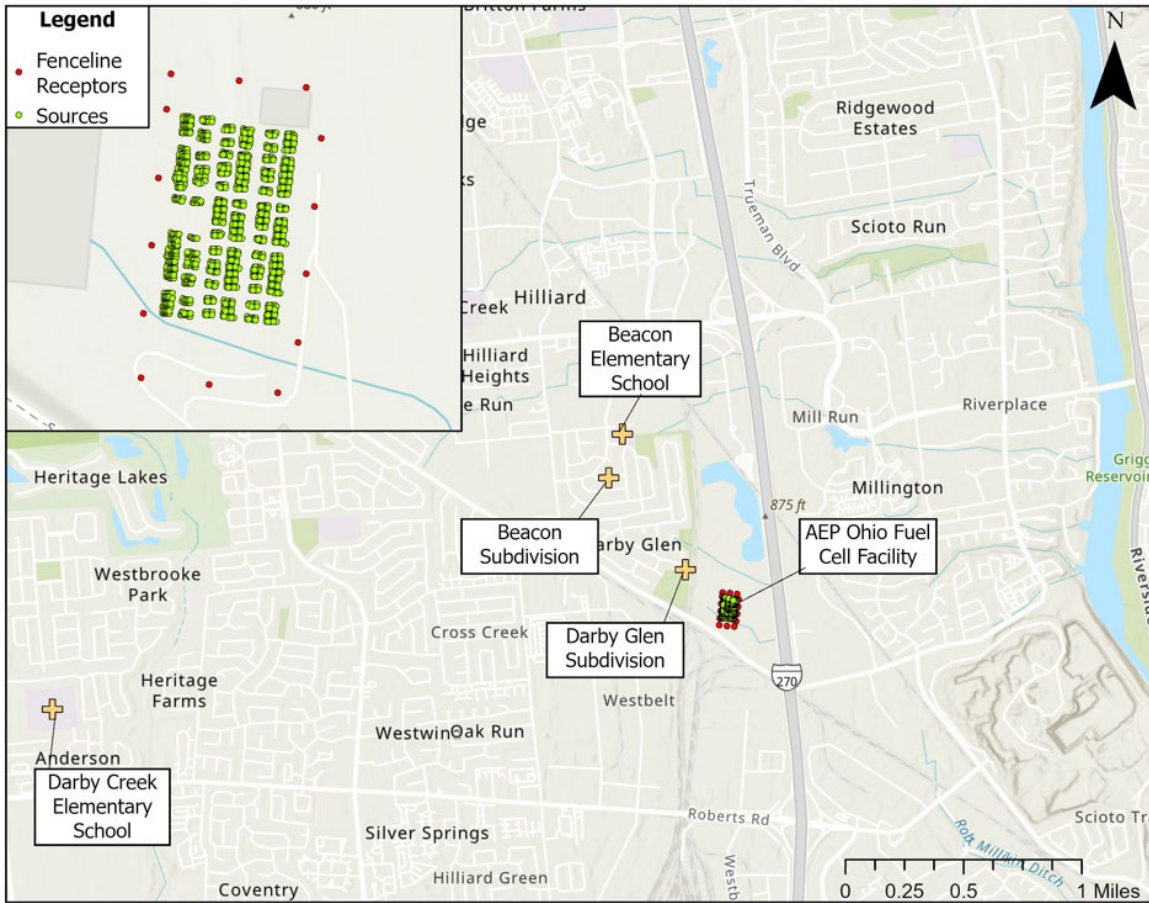


Figure 3: Site Location and Nearby Communities

3.3 Model-Predicted CO₂ Impacts

Annual impacts were assessed at the four community receptors to demonstrate the average CO₂ impacts from the fuel cell facility. 1-hour and 8-hour impacts were assessed at the community receptors as well as at fenceline receptors for comparison to the established OSHA threshold for CO₂. The model predicted CO₂ impacts at the four receptors are shown in **Table 3** below. The results are presented as the highest annual average, maximum 1-hour and maximum 8-hour concentration over the 5 years of modeled meteorological data for a given location. The Darby Glen Subdivision represents the highest predicted annual concentration among the four locations at 27.7 ppm, as the nearest residence is about 800 ft away from the fuel cell facility. As shown in **Table 3**, the predicted annual CO₂ impacts from the fuel cell facility are substantially lower than the 350 – 450 ppm that is generally found in ambient air. The 8-hour impacts are well below the OSHA PEL of 5,000 ppm at all four locations, with a highest modeled concentration of 481 ppm, or 9.6% of the OSHA standard. The 1-hour impacts were also compared to the OSHA PEL for informational purposes, but it should be noted that this is conservative, as the OSHA standard represents a longer averaging period. The highest modeled 1-hour concentration is 864 ppm, or 17% of the OSHA standard.

The 8-hour impacts were also assessed at fenceline receptors. As shown in **Table 4**, the maximum predicted 8-hour CO₂ concentration among all the nearfield fenceline receptors is 1,818 ppm, which is also well below the OSHA PEL. See **Attachment 1** for additional details.

Table 3. Model Predicted Maximum Impacts at Community Receptors

Location Name	Approximate Distance from Facility (ft)	Model Predicted CO ₂ Annual Impact (ppm)	Model Predicted CO ₂ 8-hour Impact (ppm)	Model Predicted CO ₂ 1-hour Impact (ppm)	CO ₂ OSHA 8-hour TWA PEL (ppm)
Darby Glen Subdivision	800	27.7	481	864	5,000
Beacon Subdivision	3,600	4.8	86.5	330	5,000
Beacon Elementary School	4,000	3.6	76.9	275	5,000
Darby Creek Elementary School	15,000	0.5	28.1	98	5,000

Table 4. Model Predicted Maximum Impacts at Fenceline Receptors

Fenceline Receptor	Approximate Distance to Nearest Fuel Cell (meters)	Model Predicted CO ₂ 8-hour Impact (ppm)	CO ₂ OSHA 8-hour TWA PEL (ppm)
1	31	1,533	5,000
2	34	1,594	5,000
3	35	1,428	5,000
4	20	1,502	5,000
5	20	1,362	5,000
6	18	1,522	5,000
7	22	1,648	5,000
8	52	1,721	5,000
9	51	1,818	5,000
10	50	1,752	5,000
11	14	1,745	5,000
12	12	1,667	5,000
13	12	1,644	5,000
14	14	1,625	5,000

The fence-line receptors range from 12 meters to 52 meters away from the fuel cells since the property boundary is further out in the north/south direction than it is in the east/west direction. When performing ambient air impact analyses, it is not advisable to estimate air concentrations directly adjacent to emission units using AERMOD, as there are known limitations to the model based on the way downwash from structures and buildings is calculated.¹⁵ AERMOD has been found to both overpredict and underpredict, with large overpredictions seen for short stacks with long buildings nearby.¹⁶ Due to these limitations, impacts were not analyzed closer to the fuel cells themselves.

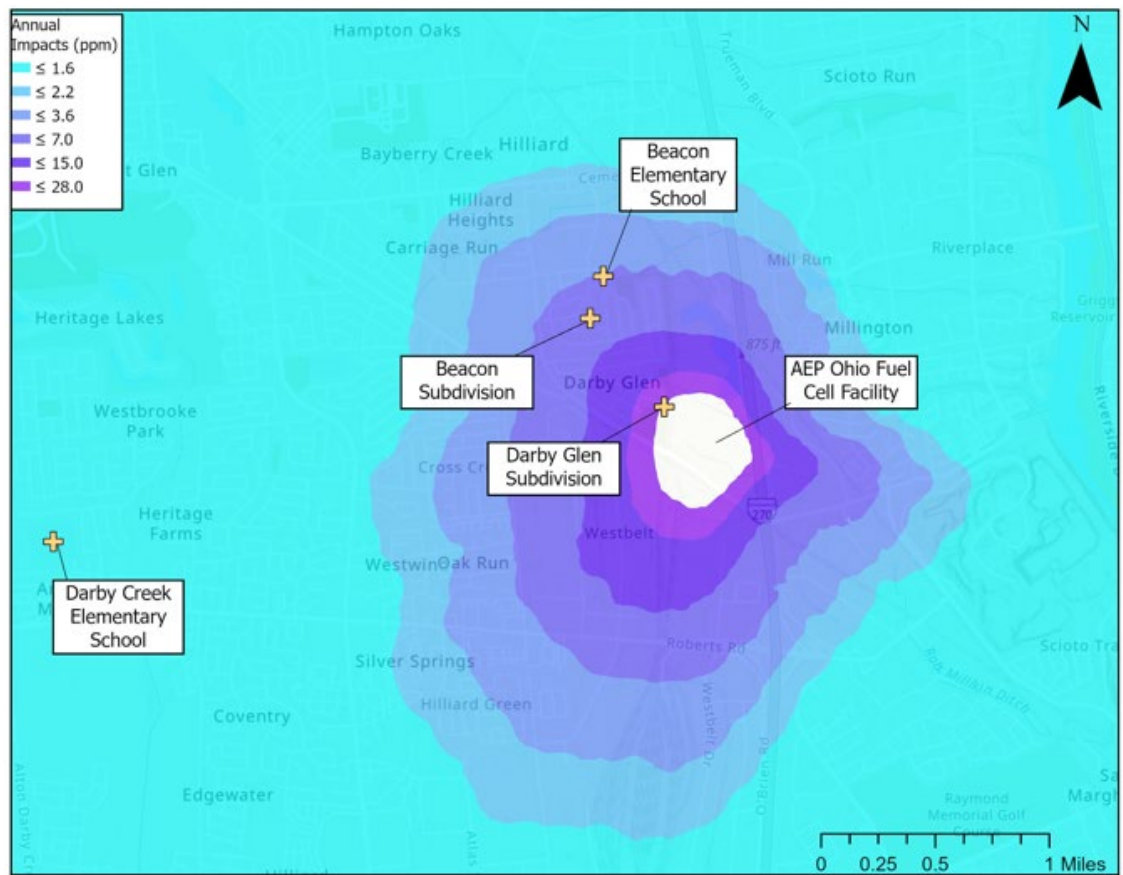


Figure 4: Maximum Annual Impacts

As seen in **Figure 4**, the annual modeled concentration of CO₂ decreases further from the fuel cell facility. Concentrations of CO₂ typically do not linger in a particular area. The highest concentrations of CO₂ would be expected when winds are stagnant, and atmospheric mixing is poor. This is typically an infrequent occurrence.¹⁷

¹⁵ https://www.epa.gov/sites/default/files/2021-01/documents/downwash_alpha_options_white_paper.pdf

¹⁶ [Critical review of the building downwash algorithms in AERMOD](#)

¹⁷ https://www.epa.gov/system/files/documents/2024-11/appendix_w-2024.pdf

3.4 CO₂ Emissions in Context

The potential CO₂ emissions from the fuel cell facility are 833 pounds of CO₂ per megawatt of electricity produced (lb/MWh). For context, the CO₂ emission rate from the best performing stationary combustion turbines is around 1,100 lb/MWh¹⁸. This means that traditional combustion technology like turbines would be expected to emit over 30% more CO₂ emissions than fuel cells to produce the same amount of electricity.

4. CONCLUSIONS

In conclusion, the air emissions from the proposed project do not represent a cause for concern to the Darby and Beacon schools and communities in the vicinity of the project site. The maximum short term, nearfield ambient air quality impacts at the property boundary also do not represent a concern. First, the project, in providing power to AWS Data Center, would be in place of conventional electric generation sources, and represent a significant reduction of all compounds that would otherwise be emitted from traditional generation. Second, as demonstrated, the predicted CO₂ concentrations from the project are a fraction of typical ambient air concentrations and are far below OSHA standards, and therefore are not predicted to have a measurable impact on local air quality or contribution to climate change.

¹⁸ <https://www.epa.gov/system/files/documents/2024-04/tsd-simple-cycle-stationary-combustion-turbine-egus-final.pdf>

ATTACHMENT 1
Modeling Documentation

Model ID	Source Type	UTM E	UTM N	Elevation	Stack Height	Stack Diameter	Stack Velocity	Stack Temperature	Emissions
		m	m	m	m	m	m/s	K	g/s
STCK1	POINT	318649.25	4431570.98	267.96	2.06	0.35	2.2	419	1
STCK2	POINT	318650.43	4431570.86	267.95	2.06	0.35	2.2	419	1
STCK3	POINT	318651.57	4431570.71	267.95	2.06	0.35	2.2	419	1
STCK4	POINT	318652.61	4431570.61	267.95	2.06	0.35	2.2	419	1
STCK5	POINT	318653.70	4431570.49	267.94	2.06	0.35	2.2	419	1
STCK6	POINT	318654.80	4431570.36	267.94	2.06	0.35	2.2	419	1
STCK7	POINT	318662.83	4431569.50	267.82	2.06	0.35	2.2	419	1
STCK8	POINT	318663.90	4431569.34	267.79	2.06	0.35	2.2	419	1
STCK9	POINT	318665.04	4431569.18	267.75	2.06	0.35	2.2	419	1
STCK10	POINT	318649.72	4431575.87	267.99	2.06	0.35	2.2	419	1
STCK11	POINT	318650.90	4431575.76	267.98	2.06	0.35	2.2	419	1
STCK12	POINT	318652.04	4431575.60	267.97	2.06	0.35	2.2	419	1
STCK13	POINT	318653.09	4431575.50	267.96	2.06	0.35	2.2	419	1
STCK14	POINT	318654.17	4431575.39	267.96	2.06	0.35	2.2	419	1
STCK15	POINT	318655.27	4431575.25	267.95	2.06	0.35	2.2	419	1
STCK16	POINT	318666.04	4431569.10	267.73	2.06	0.35	2.2	419	1
STCK17	POINT	318667.19	4431569.02	267.69	2.06	0.35	2.2	419	1
STCK18	POINT	318668.29	4431568.91	267.66	2.06	0.35	2.2	419	1
STCK19	POINT	318669.39	4431568.77	267.63	2.06	0.35	2.2	419	1
STCK20	POINT	318650.37	4431580.76	268.01	2.06	0.35	2.2	419	1
STCK21	POINT	318651.55	4431580.65	268.00	2.06	0.35	2.2	419	1
STCK22	POINT	318652.69	4431580.49	267.99	2.06	0.35	2.2	419	1
STCK23	POINT	318653.74	4431580.39	267.98	2.06	0.35	2.2	419	1
STCK24	POINT	318654.82	4431580.28	267.97	2.06	0.35	2.2	419	1
STCK25	POINT	318655.92	4431580.14	267.95	2.06	0.35	2.2	419	1
STCK26	POINT	318663.86	4431579.10	267.84	2.06	0.35	2.2	419	1
STCK27	POINT	318665.04	4431578.99	267.82	2.06	0.35	2.2	419	1
STCK28	POINT	318666.18	4431578.83	267.80	2.06	0.35	2.2	419	1
STCK29	POINT	318667.23	4431578.74	267.78	2.06	0.35	2.2	419	1
STCK30	POINT	318668.31	4431578.62	267.76	2.06	0.35	2.2	419	1
STCK31	POINT	318669.41	4431578.49	267.74	2.06	0.35	2.2	419	1
STCK32	POINT	318650.90	4431585.70	268.01	2.06	0.35	2.2	419	1
STCK33	POINT	318652.08	4431585.58	268.00	2.06	0.35	2.2	419	1
STCK34	POINT	318653.22	4431585.43	268.00	2.06	0.35	2.2	419	1
STCK35	POINT	318654.27	4431585.33	267.99	2.06	0.35	2.2	419	1
STCK36	POINT	318655.35	4431585.22	267.98	2.06	0.35	2.2	419	1
STCK37	POINT	318656.46	4431585.08	267.96	2.06	0.35	2.2	419	1
STCK38	POINT	318665.28	4431592.65	267.89	2.06	0.35	2.2	419	1
STCK39	POINT	318666.46	4431592.54	267.88	2.06	0.35	2.2	419	1
STCK40	POINT	318667.60	4431592.38	267.86	2.06	0.35	2.2	419	1
STCK41	POINT	318668.65	4431592.29	267.85	2.06	0.35	2.2	419	1
STCK42	POINT	318669.73	4431592.17	267.84	2.06	0.35	2.2	419	1
STCK43	POINT	318670.84	4431592.04	267.83	2.06	0.35	2.2	419	1
STCK44	POINT	318665.66	4431595.77	267.89	2.06	0.35	2.2	419	1
STCK45	POINT	318666.84	4431595.65	267.88	2.06	0.35	2.2	419	1
STCK46	POINT	318667.98	4431595.50	267.87	2.06	0.35	2.2	419	1
STCK47	POINT	318669.03	4431595.40	267.86	2.06	0.35	2.2	419	1
STCK48	POINT	318670.11	4431595.29	267.85	2.06	0.35	2.2	419	1
STCK49	POINT	318671.22	4431595.15	267.83	2.06	0.35	2.2	419	1
STCK50	POINT	318652.16	4431597.20	268.06	2.06	0.35	2.2	419	1
STCK51	POINT	318653.34	4431597.09	268.05	2.06	0.35	2.2	419	1
STCK52	POINT	318654.49	4431596.93	268.04	2.06	0.35	2.2	419	1
STCK53	POINT	318655.53	4431596.83	268.03	2.06	0.35	2.2	419	1
STCK54	POINT	318656.62	4431596.72	268.02	2.06	0.35	2.2	419	1

STCK55	POINT	318657.72	4431596.58	268.00	2.06	0.35	2.2	419	1
STCK56	POINT	318652.66	4431602.11	268.09	2.06	0.35	2.2	419	1
STCK57	POINT	318653.84	4431601.99	268.08	2.06	0.35	2.2	419	1
STCK58	POINT	318654.98	4431601.84	268.07	2.06	0.35	2.2	419	1
STCK59	POINT	318656.03	4431601.74	268.05	2.06	0.35	2.2	419	1
STCK60	POINT	318657.11	4431601.62	268.04	2.06	0.35	2.2	419	1
STCK61	POINT	318658.22	4431601.49	268.02	2.06	0.35	2.2	419	1
STCK62	POINT	318653.30	4431607.07	268.12	2.06	0.35	2.2	419	1
STCK63	POINT	318654.48	4431606.96	268.11	2.06	0.35	2.2	419	1
STCK64	POINT	318655.62	4431606.80	268.10	2.06	0.35	2.2	419	1
STCK65	POINT	318656.67	4431606.70	268.08	2.06	0.35	2.2	419	1
STCK66	POINT	318657.75	4431606.59	268.06	2.06	0.35	2.2	419	1
STCK67	POINT	318658.85	4431606.45	268.03	2.06	0.35	2.2	419	1
STCK68	POINT	318670.05	4431605.14	267.87	2.06	0.35	2.2	419	1
STCK69	POINT	318671.21	4431605.05	267.85	2.06	0.35	2.2	419	1
STCK70	POINT	318672.30	4431604.95	267.84	2.06	0.35	2.2	419	1
STCK71	POINT	318673.41	4431604.81	267.83	2.06	0.35	2.2	419	1
STCK72	POINT	318666.85	4431605.54	267.90	2.06	0.35	2.2	419	1
STCK73	POINT	318667.91	4431605.38	267.89	2.06	0.35	2.2	419	1
STCK74	POINT	318669.05	4431605.22	267.88	2.06	0.35	2.2	419	1
STCK75	POINT	318652.79	4431612.17	268.15	2.06	0.35	2.2	419	1
STCK76	POINT	318653.97	4431612.05	268.14	2.06	0.35	2.2	419	1
STCK77	POINT	318655.12	4431611.90	268.14	2.06	0.35	2.2	419	1
STCK78	POINT	318656.16	4431611.80	268.12	2.06	0.35	2.2	419	1
STCK79	POINT	318657.24	4431611.68	268.10	2.06	0.35	2.2	419	1
STCK80	POINT	318658.35	4431611.55	268.07	2.06	0.35	2.2	419	1
STCK81	POINT	318668.46	4431610.40	267.89	2.06	0.35	2.2	419	1
STCK82	POINT	318669.64	4431610.29	267.88	2.06	0.35	2.2	419	1
STCK83	POINT	318670.79	4431610.13	267.87	2.06	0.35	2.2	419	1
STCK84	POINT	318671.83	4431610.04	267.85	2.06	0.35	2.2	419	1
STCK85	POINT	318672.91	4431609.92	267.83	2.06	0.35	2.2	419	1
STCK86	POINT	318674.02	4431609.78	267.82	2.06	0.35	2.2	419	1
STCK87	POINT	318659.35	4431611.43	268.05	2.06	0.35	2.2	419	1
STCK88	POINT	318667.28	4431610.54	267.91	2.06	0.35	2.2	419	1
STCK89	POINT	318653.99	4431615.06	268.15	2.06	0.35	2.2	419	1
STCK90	POINT	318655.17	4431614.94	268.15	2.06	0.35	2.2	419	1
STCK91	POINT	318656.31	4431614.79	268.13	2.06	0.35	2.2	419	1
STCK92	POINT	318657.36	4431614.69	268.10	2.06	0.35	2.2	419	1
STCK93	POINT	318658.44	4431614.58	268.08	2.06	0.35	2.2	419	1
STCK94	POINT	318659.54	4431614.44	268.05	2.06	0.35	2.2	419	1
STCK95	POINT	318667.63	4431613.56	267.91	2.06	0.35	2.2	419	1
STCK96	POINT	318668.77	4431613.40	267.89	2.06	0.35	2.2	419	1
STCK97	POINT	318669.82	4431613.31	267.88	2.06	0.35	2.2	419	1
STCK98	POINT	318670.90	4431613.19	267.87	2.06	0.35	2.2	419	1
STCK99	POINT	318672.01	4431613.05	267.85	2.06	0.35	2.2	419	1
STCK100	POINT	318668.91	4431615.24	267.90	2.06	0.35	2.2	419	1
STCK101	POINT	318670.09	4431615.12	267.88	2.06	0.35	2.2	419	1
STCK102	POINT	318671.24	4431614.96	267.86	2.06	0.35	2.2	419	1
STCK103	POINT	318672.28	4431614.87	267.85	2.06	0.35	2.2	419	1
STCK104	POINT	318673.36	4431614.75	267.83	2.06	0.35	2.2	419	1
STCK105	POINT	318674.47	4431614.62	267.81	2.06	0.35	2.2	419	1
STCK106	POINT	318667.73	4431615.38	267.91	2.06	0.35	2.2	419	1
STCK107	POINT	318654.39	4431616.98	268.16	2.06	0.35	2.2	419	1
STCK108	POINT	318655.57	4431616.86	268.15	2.06	0.35	2.2	419	1
STCK109	POINT	318656.71	4431616.71	268.12	2.06	0.35	2.2	419	1
STCK110	POINT	318657.75	4431616.61	268.10	2.06	0.35	2.2	419	1
STCK111	POINT	318658.84	4431616.49	268.08	2.06	0.35	2.2	419	1
STCK112	POINT	318659.94	4431616.36	268.05	2.06	0.35	2.2	419	1

STCK113	POINT	318653.20	4431617.12	268.16	2.06	0.35	2.2	419	1
STCK114	POINT	318655.72	4431619.86	268.15	2.06	0.35	2.2	419	1
STCK115	POINT	318656.90	4431619.74	268.13	2.06	0.35	2.2	419	1
STCK116	POINT	318658.04	4431619.59	268.10	2.06	0.35	2.2	419	1
STCK117	POINT	318659.08	4431619.49	268.08	2.06	0.35	2.2	419	1
STCK118	POINT	318660.17	4431619.38	268.06	2.06	0.35	2.2	419	1
STCK119	POINT	318655.29	4431626.01	268.18	2.06	0.35	2.2	419	1
STCK120	POINT	318656.47	4431625.89	268.16	2.06	0.35	2.2	419	1
STCK121	POINT	318657.62	4431625.74	268.13	2.06	0.35	2.2	419	1
STCK122	POINT	318658.66	4431625.64	268.11	2.06	0.35	2.2	419	1
STCK123	POINT	318659.74	4431625.52	268.08	2.06	0.35	2.2	419	1
STCK124	POINT	318660.85	4431625.39	268.06	2.06	0.35	2.2	419	1
STCK125	POINT	318655.66	4431629.02	268.19	2.06	0.35	2.2	419	1
STCK126	POINT	318656.84	4431628.91	268.17	2.06	0.35	2.2	419	1
STCK127	POINT	318657.98	4431628.75	268.14	2.06	0.35	2.2	419	1
STCK128	POINT	318659.02	4431628.66	268.11	2.06	0.35	2.2	419	1
STCK129	POINT	318660.11	4431628.54	268.08	2.06	0.35	2.2	419	1
STCK130	POINT	318661.21	4431628.41	268.05	2.06	0.35	2.2	419	1
STCK131	POINT	318669.00	4431626.12	267.91	2.06	0.35	2.2	419	1
STCK132	POINT	318670.18	4431626.01	267.89	2.06	0.35	2.2	419	1
STCK133	POINT	318671.32	4431625.85	267.87	2.06	0.35	2.2	419	1
STCK134	POINT	318672.36	4431625.76	267.85	2.06	0.35	2.2	419	1
STCK135	POINT	318673.45	4431625.64	267.84	2.06	0.35	2.2	419	1
STCK136	POINT	318674.55	4431625.50	267.82	2.06	0.35	2.2	419	1
STCK137	POINT	318695.86	4431569.93	267.43	2.06	0.35	2.2	419	1
STCK138	POINT	318697.02	4431569.84	267.43	2.06	0.35	2.2	419	1
STCK139	POINT	318698.11	4431569.73	267.42	2.06	0.35	2.2	419	1
STCK140	POINT	318699.22	4431569.60	267.42	2.06	0.35	2.2	419	1
STCK141	POINT	318693.72	4431570.17	267.44	2.06	0.35	2.2	419	1
STCK142	POINT	318694.86	4431570.01	267.44	2.06	0.35	2.2	419	1
STCK143	POINT	318700.21	4431567.85	267.40	2.06	0.35	2.2	419	1
STCK144	POINT	318701.31	4431567.71	267.40	2.06	0.35	2.2	419	1
STCK145	POINT	318682.50	4431571.52	267.55	2.06	0.35	2.2	419	1
STCK146	POINT	318683.65	4431571.43	267.54	2.06	0.35	2.2	419	1
STCK147	POINT	318684.75	4431571.32	267.53	2.06	0.35	2.2	419	1
STCK148	POINT	318685.85	4431571.19	267.52	2.06	0.35	2.2	419	1
STCK149	POINT	318680.36	4431571.76	267.57	2.06	0.35	2.2	419	1
STCK150	POINT	318681.50	4431571.60	267.56	2.06	0.35	2.2	419	1
STCK151	POINT	318683.49	4431581.31	267.67	2.06	0.35	2.2	419	1
STCK152	POINT	318684.65	4431581.23	267.65	2.06	0.35	2.2	419	1
STCK153	POINT	318685.74	4431581.12	267.64	2.06	0.35	2.2	419	1
STCK154	POINT	318686.85	4431580.98	267.63	2.06	0.35	2.2	419	1
STCK155	POINT	318681.35	4431581.55	267.69	2.06	0.35	2.2	419	1
STCK156	POINT	318682.50	4431581.40	267.68	2.06	0.35	2.2	419	1
STCK157	POINT	318697.09	4431579.84	267.52	2.06	0.35	2.2	419	1
STCK158	POINT	318698.25	4431579.76	267.50	2.06	0.35	2.2	419	1
STCK159	POINT	318699.34	4431579.65	267.49	2.06	0.35	2.2	419	1
STCK160	POINT	318700.45	4431579.51	267.47	2.06	0.35	2.2	419	1
STCK161	POINT	318694.96	4431580.08	267.55	2.06	0.35	2.2	419	1
STCK162	POINT	318696.10	4431579.93	267.53	2.06	0.35	2.2	419	1
STCK163	POINT	318696.50	4431574.92	267.48	2.06	0.35	2.2	419	1
STCK164	POINT	318697.66	4431574.83	267.47	2.06	0.35	2.2	419	1
STCK165	POINT	318698.76	4431574.72	267.46	2.06	0.35	2.2	419	1
STCK166	POINT	318699.86	4431574.59	267.45	2.06	0.35	2.2	419	1
STCK167	POINT	318694.37	4431575.16	267.50	2.06	0.35	2.2	419	1
STCK168	POINT	318695.51	4431575.00	267.49	2.06	0.35	2.2	419	1
STCK169	POINT	318698.28	4431591.44	267.55	2.06	0.35	2.2	419	1
STCK170	POINT	318699.44	4431591.35	267.53	2.06	0.35	2.2	419	1

STCK171	POINT	318700.54	4431591.24	267.52	2.06	0.35	2.2	419	1
STCK172	POINT	318701.64	4431591.10	267.50	2.06	0.35	2.2	419	1
STCK173	POINT	318696.15	4431591.67	267.58	2.06	0.35	2.2	419	1
STCK174	POINT	318697.29	4431591.52	267.56	2.06	0.35	2.2	419	1
STCK175	POINT	318702.71	4431589.35	267.48	2.06	0.35	2.2	419	1
STCK176	POINT	318703.81	4431589.22	267.48	2.06	0.35	2.2	419	1
STCK177	POINT	318684.82	4431592.94	267.68	2.06	0.35	2.2	419	1
STCK178	POINT	318685.98	4431592.86	267.67	2.06	0.35	2.2	419	1
STCK179	POINT	318687.07	4431592.75	267.66	2.06	0.35	2.2	419	1
STCK180	POINT	318688.17	4431592.61	267.65	2.06	0.35	2.2	419	1
STCK181	POINT	318682.68	4431593.18	267.71	2.06	0.35	2.2	419	1
STCK182	POINT	318683.82	4431593.03	267.70	2.06	0.35	2.2	419	1
STCK183	POINT	318685.95	4431602.85	267.63	2.06	0.35	2.2	419	1
STCK184	POINT	318687.11	4431602.76	267.62	2.06	0.35	2.2	419	1
STCK185	POINT	318688.20	4431602.65	267.61	2.06	0.35	2.2	419	1
STCK186	POINT	318689.30	4431602.52	267.61	2.06	0.35	2.2	419	1
STCK187	POINT	318683.81	4431603.09	267.67	2.06	0.35	2.2	419	1
STCK188	POINT	318684.96	4431602.93	267.65	2.06	0.35	2.2	419	1
STCK189	POINT	318699.47	4431601.28	267.55	2.06	0.35	2.2	419	1
STCK190	POINT	318700.62	4431601.19	267.54	2.06	0.35	2.2	419	1
STCK191	POINT	318701.72	4431601.08	267.53	2.06	0.35	2.2	419	1
STCK192	POINT	318702.82	4431600.94	267.52	2.06	0.35	2.2	419	1
STCK193	POINT	318697.33	4431601.51	267.56	2.06	0.35	2.2	419	1
STCK194	POINT	318698.47	4431601.36	267.55	2.06	0.35	2.2	419	1
STCK195	POINT	318698.81	4431596.40	267.55	2.06	0.35	2.2	419	1
STCK196	POINT	318699.96	4431596.32	267.54	2.06	0.35	2.2	419	1
STCK197	POINT	318701.06	4431596.21	267.53	2.06	0.35	2.2	419	1
STCK198	POINT	318702.16	4431596.07	267.52	2.06	0.35	2.2	419	1
STCK199	POINT	318696.67	4431596.64	267.58	2.06	0.35	2.2	419	1
STCK200	POINT	318697.81	4431596.49	267.56	2.06	0.35	2.2	419	1
STCK201	POINT	318700.00	4431606.31	267.53	2.06	0.35	2.2	419	1
STCK202	POINT	318701.16	4431606.23	267.52	2.06	0.35	2.2	419	1
STCK203	POINT	318702.25	4431606.12	267.51	2.06	0.35	2.2	419	1
STCK204	POINT	318703.36	4431605.99	267.51	2.06	0.35	2.2	419	1
STCK205	POINT	318697.86	4431606.55	267.54	2.06	0.35	2.2	419	1
STCK206	POINT	318699.01	4431606.40	267.53	2.06	0.35	2.2	419	1
STCK207	POINT	318704.13	4431603.91	267.52	2.06	0.35	2.2	419	1
STCK208	POINT	318705.24	4431603.77	267.52	2.06	0.35	2.2	419	1
STCK209	POINT	318686.36	4431607.81	267.61	2.06	0.35	2.2	419	1
STCK210	POINT	318687.52	4431607.73	267.60	2.06	0.35	2.2	419	1
STCK211	POINT	318688.61	4431607.62	267.59	2.06	0.35	2.2	419	1
STCK212	POINT	318689.71	4431607.48	267.58	2.06	0.35	2.2	419	1
STCK213	POINT	318684.22	4431608.05	267.65	2.06	0.35	2.2	419	1
STCK214	POINT	318685.36	4431607.90	267.63	2.06	0.35	2.2	419	1
STCK215	POINT	318687.50	4431617.54	267.58	2.06	0.35	2.2	419	1
STCK216	POINT	318688.65	4431617.46	267.57	2.06	0.35	2.2	419	1
STCK217	POINT	318689.75	4431617.34	267.56	2.06	0.35	2.2	419	1
STCK218	POINT	318690.85	4431617.21	267.55	2.06	0.35	2.2	419	1
STCK219	POINT	318685.36	4431617.78	267.62	2.06	0.35	2.2	419	1
STCK220	POINT	318686.50	4431617.62	267.60	2.06	0.35	2.2	419	1
STCK221	POINT	318701.06	4431616.05	267.50	2.06	0.35	2.2	419	1
STCK222	POINT	318702.22	4431615.97	267.50	2.06	0.35	2.2	419	1
STCK223	POINT	318703.31	4431615.86	267.50	2.06	0.35	2.2	419	1
STCK224	POINT	318704.41	4431615.72	267.52	2.06	0.35	2.2	419	1
STCK225	POINT	318698.92	4431616.29	267.51	2.06	0.35	2.2	419	1
STCK226	POINT	318700.06	4431616.14	267.51	2.06	0.35	2.2	419	1
STCK227	POINT	318700.53	4431611.11	267.51	2.06	0.35	2.2	419	1
STCK228	POINT	318701.68	4431611.02	267.51	2.06	0.35	2.2	419	1

STCK229	POINT	318702.78	4431610.91	267.50	2.06	0.35	2.2	419	1
STCK230	POINT	318703.88	4431610.78	267.51	2.06	0.35	2.2	419	1
STCK231	POINT	318698.39	4431611.34	267.52	2.06	0.35	2.2	419	1
STCK232	POINT	318699.53	4431611.19	267.51	2.06	0.35	2.2	419	1
STCK233	POINT	318662.40	4431691.14	267.74	2.06	0.35	2.2	419	1
STCK234	POINT	318663.58	4431691.02	267.73	2.06	0.35	2.2	419	1
STCK235	POINT	318664.72	4431690.87	267.72	2.06	0.35	2.2	419	1
STCK236	POINT	318665.77	4431690.77	267.71	2.06	0.35	2.2	419	1
STCK237	POINT	318666.85	4431690.66	267.70	2.06	0.35	2.2	419	1
STCK238	POINT	318667.95	4431690.52	267.70	2.06	0.35	2.2	419	1
STCK239	POINT	318662.18	4431688.10	267.77	2.06	0.35	2.2	419	1
STCK240	POINT	318663.36	4431687.98	267.76	2.06	0.35	2.2	419	1
STCK241	POINT	318664.51	4431687.83	267.74	2.06	0.35	2.2	419	1
STCK242	POINT	318665.55	4431687.73	267.74	2.06	0.35	2.2	419	1
STCK243	POINT	318666.64	4431687.62	267.73	2.06	0.35	2.2	419	1
STCK244	POINT	318667.74	4431687.48	267.73	2.06	0.35	2.2	419	1
STCK245	POINT	318661.57	4431683.25	267.81	2.06	0.35	2.2	419	1
STCK246	POINT	318662.75	4431683.14	267.80	2.06	0.35	2.2	419	1
STCK247	POINT	318663.89	4431682.98	267.79	2.06	0.35	2.2	419	1
STCK248	POINT	318664.94	4431682.88	267.78	2.06	0.35	2.2	419	1
STCK249	POINT	318666.02	4431682.77	267.78	2.06	0.35	2.2	419	1
STCK250	POINT	318667.13	4431682.63	267.78	2.06	0.35	2.2	419	1
STCK251	POINT	318661.05	4431678.31	267.85	2.06	0.35	2.2	419	1
STCK252	POINT	318662.24	4431678.19	267.85	2.06	0.35	2.2	419	1
STCK253	POINT	318663.38	4431678.04	267.84	2.06	0.35	2.2	419	1
STCK254	POINT	318664.42	4431677.94	267.83	2.06	0.35	2.2	419	1
STCK255	POINT	318665.51	4431677.83	267.82	2.06	0.35	2.2	419	1
STCK256	POINT	318666.61	4431677.69	267.82	2.06	0.35	2.2	419	1
STCK257	POINT	318675.67	4431686.64	267.67	2.06	0.35	2.2	419	1
STCK258	POINT	318676.85	4431686.52	267.64	2.06	0.35	2.2	419	1
STCK259	POINT	318677.99	4431686.37	267.62	2.06	0.35	2.2	419	1
STCK260	POINT	318679.04	4431686.27	267.60	2.06	0.35	2.2	419	1
STCK261	POINT	318680.12	4431686.16	267.57	2.06	0.35	2.2	419	1
STCK262	POINT	318681.22	4431686.02	267.55	2.06	0.35	2.2	419	1
STCK263	POINT	318677.81	4431676.51	267.68	2.06	0.35	2.2	419	1
STCK264	POINT	318678.97	4431676.42	267.65	2.06	0.35	2.2	419	1
STCK265	POINT	318680.06	4431676.31	267.62	2.06	0.35	2.2	419	1
STCK266	POINT	318681.17	4431676.18	267.60	2.06	0.35	2.2	419	1
STCK267	POINT	318674.61	4431676.90	267.76	2.06	0.35	2.2	419	1
STCK268	POINT	318675.67	4431676.75	267.73	2.06	0.35	2.2	419	1
STCK269	POINT	318676.82	4431676.59	267.70	2.06	0.35	2.2	419	1
STCK270	POINT	318677.34	4431670.60	267.72	2.06	0.35	2.2	419	1
STCK271	POINT	318678.49	4431670.52	267.69	2.06	0.35	2.2	419	1
STCK272	POINT	318679.59	4431670.41	267.66	2.06	0.35	2.2	419	1
STCK273	POINT	318680.69	4431670.27	267.63	2.06	0.35	2.2	419	1
STCK274	POINT	318674.14	4431671.00	267.81	2.06	0.35	2.2	419	1
STCK275	POINT	318675.20	4431670.84	267.78	2.06	0.35	2.2	419	1
STCK276	POINT	318676.34	4431670.69	267.75	2.06	0.35	2.2	419	1
STCK277	POINT	318662.54	4431672.24	267.89	2.06	0.35	2.2	419	1
STCK278	POINT	318663.69	4431672.15	267.89	2.06	0.35	2.2	419	1
STCK279	POINT	318664.79	4431672.04	267.88	2.06	0.35	2.2	419	1
STCK280	POINT	318665.89	4431671.91	267.88	2.06	0.35	2.2	419	1
STCK281	POINT	318659.33	4431672.63	267.90	2.06	0.35	2.2	419	1
STCK282	POINT	318660.40	4431672.48	267.90	2.06	0.35	2.2	419	1
STCK283	POINT	318661.54	4431672.32	267.89	2.06	0.35	2.2	419	1
STCK284	POINT	318659.84	4431667.68	267.95	2.06	0.35	2.2	419	1
STCK285	POINT	318661.02	4431667.56	267.94	2.06	0.35	2.2	419	1
STCK286	POINT	318662.16	4431667.41	267.94	2.06	0.35	2.2	419	1

STCK287	POINT	318663.20	4431667.31	267.94	2.06	0.35	2.2	419	1
STCK288	POINT	318664.29	4431667.20	267.93	2.06	0.35	2.2	419	1
STCK289	POINT	318665.39	4431667.06	267.93	2.06	0.35	2.2	419	1
STCK290	POINT	318662.08	4431669.26	267.92	2.06	0.35	2.2	419	1
STCK291	POINT	318663.23	4431669.17	267.92	2.06	0.35	2.2	419	1
STCK292	POINT	318664.33	4431669.06	267.91	2.06	0.35	2.2	419	1
STCK293	POINT	318665.43	4431668.93	267.91	2.06	0.35	2.2	419	1
STCK294	POINT	318658.88	4431669.65	267.93	2.06	0.35	2.2	419	1
STCK295	POINT	318659.94	4431669.50	267.93	2.06	0.35	2.2	419	1
STCK296	POINT	318661.08	4431669.34	267.93	2.06	0.35	2.2	419	1
STCK297	POINT	318676.80	4431667.71	267.73	2.06	0.35	2.2	419	1
STCK298	POINT	318677.95	4431667.62	267.70	2.06	0.35	2.2	419	1
STCK299	POINT	318679.05	4431667.51	267.67	2.06	0.35	2.2	419	1
STCK300	POINT	318680.15	4431667.38	267.65	2.06	0.35	2.2	419	1
STCK301	POINT	318673.60	4431668.10	267.82	2.06	0.35	2.2	419	1
STCK302	POINT	318674.66	4431667.94	267.79	2.06	0.35	2.2	419	1
STCK303	POINT	318675.80	4431667.79	267.76	2.06	0.35	2.2	419	1
STCK304	POINT	318676.55	4431665.77	267.74	2.06	0.35	2.2	419	1
STCK305	POINT	318677.71	4431665.68	267.71	2.06	0.35	2.2	419	1
STCK306	POINT	318673.35	4431666.16	267.83	2.06	0.35	2.2	419	1
STCK307	POINT	318674.42	4431666.01	267.80	2.06	0.35	2.2	419	1
STCK308	POINT	318675.56	4431665.85	267.77	2.06	0.35	2.2	419	1
STCK309	POINT	318663.94	4431664.11	267.97	2.06	0.35	2.2	419	1
STCK310	POINT	318665.10	4431664.03	267.96	2.06	0.35	2.2	419	1
STCK311	POINT	318660.74	4431664.51	267.97	2.06	0.35	2.2	419	1
STCK312	POINT	318661.80	4431664.35	267.97	2.06	0.35	2.2	419	1
STCK313	POINT	318662.95	4431664.20	267.97	2.06	0.35	2.2	419	1
STCK314	POINT	318661.75	4431654.63	268.03	2.06	0.35	2.2	419	1
STCK315	POINT	318662.90	4431654.54	268.02	2.06	0.35	2.2	419	1
STCK316	POINT	318664.00	4431654.43	268.00	2.06	0.35	2.2	419	1
STCK317	POINT	318658.54	4431655.02	268.06	2.06	0.35	2.2	419	1
STCK318	POINT	318659.61	4431654.87	268.05	2.06	0.35	2.2	419	1
STCK319	POINT	318660.75	4431654.71	268.04	2.06	0.35	2.2	419	1
STCK320	POINT	318675.11	4431651.45	267.78	2.06	0.35	2.2	419	1
STCK321	POINT	318676.26	4431651.36	267.76	2.06	0.35	2.2	419	1
STCK322	POINT	318677.36	4431651.25	267.74	2.06	0.35	2.2	419	1
STCK323	POINT	318671.91	4431651.84	267.84	2.06	0.35	2.2	419	1
STCK324	POINT	318672.97	4431651.68	267.82	2.06	0.35	2.2	419	1
STCK325	POINT	318674.11	4431651.53	267.80	2.06	0.35	2.2	419	1
STCK326	POINT	318693.09	4431688.08	267.43	2.06	0.35	2.2	419	1
STCK327	POINT	318694.27	4431687.97	267.44	2.06	0.35	2.2	419	1
STCK328	POINT	318695.41	4431687.81	267.44	2.06	0.35	2.2	419	1
STCK329	POINT	318696.46	4431687.72	267.44	2.06	0.35	2.2	419	1
STCK330	POINT	318697.54	4431687.60	267.46	2.06	0.35	2.2	419	1
STCK331	POINT	318698.64	4431687.46	267.51	2.06	0.35	2.2	419	1
STCK332	POINT	318706.55	4431686.58	267.78	2.06	0.35	2.2	419	1
STCK333	POINT	318707.73	4431686.46	267.81	2.06	0.35	2.2	419	1
STCK334	POINT	318708.88	4431686.30	267.83	2.06	0.35	2.2	419	1
STCK335	POINT	318709.92	4431686.21	267.86	2.06	0.35	2.2	419	1
STCK336	POINT	318711.00	4431686.09	267.88	2.06	0.35	2.2	419	1
STCK337	POINT	318712.11	4431685.96	267.91	2.06	0.35	2.2	419	1
STCK338	POINT	318706.05	4431682.08	267.76	2.06	0.35	2.2	419	1
STCK339	POINT	318707.23	4431681.97	267.79	2.06	0.35	2.2	419	1
STCK340	POINT	318708.37	4431681.81	267.82	2.06	0.35	2.2	419	1
STCK341	POINT	318709.41	4431681.71	267.85	2.06	0.35	2.2	419	1
STCK342	POINT	318710.50	4431681.60	267.88	2.06	0.35	2.2	419	1
STCK343	POINT	318711.60	4431681.46	267.90	2.06	0.35	2.2	419	1
STCK344	POINT	318705.58	4431677.10	267.73	2.06	0.35	2.2	419	1

STCK345	POINT	318706.77	4431676.99	267.76	2.06	0.35	2.2	419	1
STCK346	POINT	318707.91	4431676.83	267.80	2.06	0.35	2.2	419	1
STCK347	POINT	318708.95	4431676.74	267.83	2.06	0.35	2.2	419	1
STCK348	POINT	318710.04	4431676.62	267.86	2.06	0.35	2.2	419	1
STCK349	POINT	318711.14	4431676.48	267.89	2.06	0.35	2.2	419	1
STCK350	POINT	318691.99	4431678.65	267.46	2.06	0.35	2.2	419	1
STCK351	POINT	318693.17	4431678.54	267.46	2.06	0.35	2.2	419	1
STCK352	POINT	318694.31	4431678.38	267.46	2.06	0.35	2.2	419	1
STCK353	POINT	318695.36	4431678.29	267.46	2.06	0.35	2.2	419	1
STCK354	POINT	318696.44	4431678.17	267.46	2.06	0.35	2.2	419	1
STCK355	POINT	318697.55	4431678.03	267.49	2.06	0.35	2.2	419	1
STCK356	POINT	318691.53	4431674.11	267.48	2.06	0.35	2.2	419	1
STCK357	POINT	318692.71	4431674.00	267.48	2.06	0.35	2.2	419	1
STCK358	POINT	318693.85	4431673.84	267.48	2.06	0.35	2.2	419	1
STCK359	POINT	318694.89	4431673.75	267.48	2.06	0.35	2.2	419	1
STCK360	POINT	318695.98	4431673.63	267.48	2.06	0.35	2.2	419	1
STCK361	POINT	318697.08	4431673.49	267.49	2.06	0.35	2.2	419	1
STCK362	POINT	318705.03	4431672.55	267.69	2.06	0.35	2.2	419	1
STCK363	POINT	318706.21	4431672.44	267.73	2.06	0.35	2.2	419	1
STCK364	POINT	318707.35	4431672.28	267.77	2.06	0.35	2.2	419	1
STCK365	POINT	318708.40	4431672.18	267.80	2.06	0.35	2.2	419	1
STCK366	POINT	318709.48	4431672.07	267.84	2.06	0.35	2.2	419	1
STCK367	POINT	318710.58	4431671.93	267.88	2.06	0.35	2.2	419	1
STCK368	POINT	318704.48	4431668.05	267.63	2.06	0.35	2.2	419	1
STCK369	POINT	318705.66	4431667.94	267.67	2.06	0.35	2.2	419	1
STCK370	POINT	318706.80	4431667.78	267.72	2.06	0.35	2.2	419	1
STCK371	POINT	318707.84	4431667.69	267.76	2.06	0.35	2.2	419	1
STCK372	POINT	318708.93	4431667.57	267.80	2.06	0.35	2.2	419	1
STCK373	POINT	318710.03	4431667.44	267.84	2.06	0.35	2.2	419	1
STCK374	POINT	318703.94	4431663.19	267.57	2.06	0.35	2.2	419	1
STCK375	POINT	318705.12	4431663.08	267.61	2.06	0.35	2.2	419	1
STCK376	POINT	318706.26	4431662.92	267.66	2.06	0.35	2.2	419	1
STCK377	POINT	318707.30	4431662.83	267.70	2.06	0.35	2.2	419	1
STCK378	POINT	318708.39	4431662.71	267.75	2.06	0.35	2.2	419	1
STCK379	POINT	318709.49	4431662.57	267.80	2.06	0.35	2.2	419	1
STCK380	POINT	318690.42	4431664.66	267.53	2.06	0.35	2.2	419	1
STCK381	POINT	318691.60	4431664.55	267.52	2.06	0.35	2.2	419	1
STCK382	POINT	318692.74	4431664.39	267.52	2.06	0.35	2.2	419	1
STCK383	POINT	318693.79	4431664.30	267.51	2.06	0.35	2.2	419	1
STCK384	POINT	318694.87	4431664.18	267.51	2.06	0.35	2.2	419	1
STCK385	POINT	318695.98	4431664.04	267.50	2.06	0.35	2.2	419	1
STCK386	POINT	318687.69	4431639.46	267.57	2.06	0.35	2.2	419	1
STCK387	POINT	318688.87	4431639.34	267.56	2.06	0.35	2.2	419	1
STCK388	POINT	318690.01	4431639.19	267.55	2.06	0.35	2.2	419	1
STCK389	POINT	318691.06	4431639.09	267.55	2.06	0.35	2.2	419	1
STCK390	POINT	318692.14	4431638.97	267.54	2.06	0.35	2.2	419	1
STCK391	POINT	318693.24	4431638.84	267.53	2.06	0.35	2.2	419	1
STCK392	POINT	318701.17	4431637.93	267.53	2.06	0.35	2.2	419	1
STCK393	POINT	318702.35	4431637.81	267.53	2.06	0.35	2.2	419	1
STCK394	POINT	318703.50	4431637.66	267.54	2.06	0.35	2.2	419	1
STCK395	POINT	318704.54	4431637.56	267.57	2.06	0.35	2.2	419	1
STCK396	POINT	318705.62	4431637.44	267.60	2.06	0.35	2.2	419	1
STCK397	POINT	318706.73	4431637.31	267.63	2.06	0.35	2.2	419	1
STCK398	POINT	318700.60	4431632.96	267.52	2.06	0.35	2.2	419	1
STCK399	POINT	318701.78	4431632.84	267.52	2.06	0.35	2.2	419	1
STCK400	POINT	318702.92	4431632.68	267.53	2.06	0.35	2.2	419	1
STCK401	POINT	318703.96	4431632.59	267.54	2.06	0.35	2.2	419	1
STCK402	POINT	318705.05	4431632.47	267.57	2.06	0.35	2.2	419	1

STCK403	POINT	318706.15	4431632.34	267.60	2.06	0.35	2.2	419	1
STCK404	POINT	318700.02	4431628.04	267.51	2.06	0.35	2.2	419	1
STCK405	POINT	318701.20	4431627.92	267.51	2.06	0.35	2.2	419	1
STCK406	POINT	318702.34	4431627.77	267.52	2.06	0.35	2.2	419	1
STCK407	POINT	318703.39	4431627.67	267.52	2.06	0.35	2.2	419	1
STCK408	POINT	318704.47	4431627.56	267.54	2.06	0.35	2.2	419	1
STCK409	POINT	318705.58	4431627.42	267.57	2.06	0.35	2.2	419	1
STCK410	POINT	318686.66	4431629.56	267.59	2.06	0.35	2.2	419	1
STCK411	POINT	318687.84	4431629.45	267.56	2.06	0.35	2.2	419	1
STCK412	POINT	318688.99	4431629.29	267.55	2.06	0.35	2.2	419	1
STCK413	POINT	318690.03	4431629.19	267.54	2.06	0.35	2.2	419	1
STCK414	POINT	318691.11	4431629.08	267.53	2.06	0.35	2.2	419	1
STCK415	POINT	318692.22	4431628.94	267.52	2.06	0.35	2.2	419	1
STCK416	POINT	318706.59	4431625.51	267.58	2.06	0.35	2.2	419	1
STCK417	POINT	318707.70	4431625.38	267.60	2.06	0.35	2.2	419	1
STCK418	POINT	318688.22	4431643.85	267.57	2.06	0.35	2.2	419	1
STCK419	POINT	318689.40	4431643.74	267.56	2.06	0.35	2.2	419	1
STCK420	POINT	318690.54	4431643.58	267.55	2.06	0.35	2.2	419	1
STCK421	POINT	318691.59	4431643.49	267.55	2.06	0.35	2.2	419	1
STCK422	POINT	318692.67	4431643.37	267.54	2.06	0.35	2.2	419	1
STCK423	POINT	318693.78	4431643.24	267.53	2.06	0.35	2.2	419	1
STCK424	POINT	318701.64	4431642.35	267.53	2.06	0.35	2.2	419	1
STCK425	POINT	318702.83	4431642.24	267.53	2.06	0.35	2.2	419	1
STCK426	POINT	318703.97	4431642.08	267.54	2.06	0.35	2.2	419	1
STCK427	POINT	318705.01	4431641.98	267.58	2.06	0.35	2.2	419	1
STCK428	POINT	318706.10	4431641.87	267.62	2.06	0.35	2.2	419	1
STCK429	POINT	318707.20	4431641.73	267.66	2.06	0.35	2.2	419	1
STCK430	POINT	318688.66	4431648.40	267.58	2.06	0.35	2.2	419	1
STCK431	POINT	318689.84	4431648.28	267.57	2.06	0.35	2.2	419	1
STCK432	POINT	318690.98	4431648.13	267.56	2.06	0.35	2.2	419	1
STCK433	POINT	318692.03	4431648.03	267.55	2.06	0.35	2.2	419	1
STCK434	POINT	318693.11	4431647.92	267.54	2.06	0.35	2.2	419	1
STCK435	POINT	318694.21	4431647.78	267.53	2.06	0.35	2.2	419	1
STCK436	POINT	318689.23	4431653.35	267.57	2.06	0.35	2.2	419	1
STCK437	POINT	318690.41	4431653.23	267.56	2.06	0.35	2.2	419	1
STCK438	POINT	318691.55	4431653.08	267.55	2.06	0.35	2.2	419	1
STCK439	POINT	318692.60	4431652.98	267.54	2.06	0.35	2.2	419	1
STCK440	POINT	318693.68	4431652.87	267.53	2.06	0.35	2.2	419	1
STCK441	POINT	318694.78	4431652.73	267.53	2.06	0.35	2.2	419	1
STCK442	POINT	318702.69	4431651.82	267.50	2.06	0.35	2.2	419	1
STCK443	POINT	318703.87	4431651.71	267.50	2.06	0.35	2.2	419	1
STCK444	POINT	318705.01	4431651.55	267.54	2.06	0.35	2.2	419	1
STCK445	POINT	318706.05	4431651.45	267.59	2.06	0.35	2.2	419	1
STCK446	POINT	318707.14	4431651.34	267.63	2.06	0.35	2.2	419	1
STCK447	POINT	318708.24	4431651.20	267.68	2.06	0.35	2.2	419	1
STCK448	POINT	318695.08	4431706.62	267.44	2.06	0.35	2.2	419	1
STCK449	POINT	318696.26	4431706.50	267.44	2.06	0.35	2.2	419	1
STCK450	POINT	318697.40	4431706.35	267.45	2.06	0.35	2.2	419	1
STCK451	POINT	318698.44	4431706.25	267.51	2.06	0.35	2.2	419	1
STCK452	POINT	318699.53	4431706.13	267.57	2.06	0.35	2.2	419	1
STCK453	POINT	318700.63	4431706.00	267.63	2.06	0.35	2.2	419	1
STCK454	POINT	318708.54	4431705.06	267.86	2.06	0.35	2.2	419	1
STCK455	POINT	318709.72	4431704.95	267.86	2.06	0.35	2.2	419	1
STCK456	POINT	318710.86	4431704.79	267.85	2.06	0.35	2.2	419	1
STCK457	POINT	318711.91	4431704.70	267.85	2.06	0.35	2.2	419	1
STCK458	POINT	318712.99	4431704.58	267.85	2.06	0.35	2.2	419	1
STCK459	POINT	318714.10	4431704.44	267.82	2.06	0.35	2.2	419	1
STCK460	POINT	318708.05	4431700.11	267.84	2.06	0.35	2.2	419	1

STCK461	POINT	318709.23	4431699.99	267.85	2.06	0.35	2.2	419	1
STCK462	POINT	318710.38	4431699.84	267.85	2.06	0.35	2.2	419	1
STCK463	POINT	318711.42	4431699.74	267.86	2.06	0.35	2.2	419	1
STCK464	POINT	318712.51	4431699.62	267.86	2.06	0.35	2.2	419	1
STCK465	POINT	318713.61	4431699.49	267.84	2.06	0.35	2.2	419	1
STCK466	POINT	318707.51	4431695.11	267.82	2.06	0.35	2.2	419	1
STCK467	POINT	318708.69	4431695.00	267.84	2.06	0.35	2.2	419	1
STCK468	POINT	318709.83	4431694.84	267.85	2.06	0.35	2.2	419	1
STCK469	POINT	318710.87	4431694.75	267.86	2.06	0.35	2.2	419	1
STCK470	POINT	318711.96	4431694.63	267.88	2.06	0.35	2.2	419	1
STCK471	POINT	318713.06	4431694.50	267.88	2.06	0.35	2.2	419	1
STCK472	POINT	318694.01	4431696.66	267.43	2.06	0.35	2.2	419	1
STCK473	POINT	318695.19	4431696.55	267.43	2.06	0.35	2.2	419	1
STCK474	POINT	318696.34	4431696.39	267.43	2.06	0.35	2.2	419	1
STCK475	POINT	318697.38	4431696.30	267.45	2.06	0.35	2.2	419	1
STCK476	POINT	318698.47	4431696.18	267.50	2.06	0.35	2.2	419	1
STCK477	POINT	318699.57	4431696.04	267.55	2.06	0.35	2.2	419	1
STCK478	POINT	318663.99	4431704.61	267.61	2.06	0.35	2.2	419	1
STCK479	POINT	318665.16	4431704.49	267.59	2.06	0.35	2.2	419	1
STCK480	POINT	318666.31	4431704.33	267.58	2.06	0.35	2.2	419	1
STCK481	POINT	318667.35	4431704.24	267.58	2.06	0.35	2.2	419	1
STCK482	POINT	318668.44	4431704.12	267.58	2.06	0.35	2.2	419	1
STCK483	POINT	318669.54	4431703.99	267.57	2.06	0.35	2.2	419	1
STCK484	POINT	318677.43	4431703.08	267.54	2.06	0.35	2.2	419	1
STCK485	POINT	318678.61	4431702.97	267.53	2.06	0.35	2.2	419	1
STCK486	POINT	318679.76	4431702.81	267.52	2.06	0.35	2.2	419	1
STCK487	POINT	318680.80	4431702.71	267.52	2.06	0.35	2.2	419	1
STCK488	POINT	318681.88	4431702.60	267.51	2.06	0.35	2.2	419	1
STCK489	POINT	318682.99	4431702.46	267.49	2.06	0.35	2.2	419	1
STCK490	POINT	318676.88	4431698.17	267.57	2.06	0.35	2.2	419	1
STCK491	POINT	318678.06	4431698.05	267.56	2.06	0.35	2.2	419	1
STCK492	POINT	318679.20	4431697.90	267.55	2.06	0.35	2.2	419	1
STCK493	POINT	318680.24	4431697.80	267.53	2.06	0.35	2.2	419	1
STCK494	POINT	318681.33	4431697.69	267.52	2.06	0.35	2.2	419	1
STCK495	POINT	318682.43	4431697.55	267.51	2.06	0.35	2.2	419	1
STCK496	POINT	318664.52	4431709.49	267.57	2.06	0.35	2.2	419	1
STCK497	POINT	318665.70	4431709.38	267.56	2.06	0.35	2.2	419	1
STCK498	POINT	318666.84	4431709.22	267.55	2.06	0.35	2.2	419	1
STCK499	POINT	318667.89	4431709.12	267.54	2.06	0.35	2.2	419	1
STCK500	POINT	318668.97	4431709.01	267.54	2.06	0.35	2.2	419	1
STCK501	POINT	318670.08	4431708.87	267.53	2.06	0.35	2.2	419	1
STCK502	POINT	318664.99	4431714.44	267.54	2.06	0.35	2.2	419	1
STCK503	POINT	318666.17	4431714.33	267.52	2.06	0.35	2.2	419	1
STCK504	POINT	318667.31	4431714.17	267.52	2.06	0.35	2.2	419	1
STCK505	POINT	318668.36	4431714.08	267.51	2.06	0.35	2.2	419	1
STCK506	POINT	318669.44	4431713.96	267.50	2.06	0.35	2.2	419	1
STCK507	POINT	318670.55	4431713.82	267.50	2.06	0.35	2.2	419	1
STCK508	POINT	318679.62	4431712.80	267.47	2.06	0.35	2.2	419	1
STCK509	POINT	318680.80	4431712.68	267.47	2.06	0.35	2.2	419	1
STCK510	POINT	318681.94	4431712.52	267.46	2.06	0.35	2.2	419	1
STCK511	POINT	318682.98	4431712.43	267.46	2.06	0.35	2.2	419	1
STCK512	POINT	318684.07	4431712.31	267.46	2.06	0.35	2.2	419	1
STCK513	POINT	318685.17	4431712.18	267.45	2.06	0.35	2.2	419	1
STCK514	POINT	318678.57	4431712.94	267.47	2.06	0.35	2.2	419	1
STCK515	POINT	318727.54	4431566.33	267.35	2.06	0.35	2.2	419	1
STCK516	POINT	318728.70	4431566.25	267.32	2.06	0.35	2.2	419	1
STCK517	POINT	318729.80	4431566.14	267.29	2.06	0.35	2.2	419	1
STCK518	POINT	318730.90	4431566.00	267.26	2.06	0.35	2.2	419	1

STCK519	POINT	318725.41	4431566.57	267.40	2.06	0.35	2.2	419	1
STCK520	POINT	318726.55	4431566.42	267.38	2.06	0.35	2.2	419	1
STCK521	POINT	318731.82	4431564.20	267.20	2.06	0.35	2.2	419	1
STCK522	POINT	318732.92	4431564.06	267.17	2.06	0.35	2.2	419	1
STCK523	POINT	318714.12	4431567.91	267.37	2.06	0.35	2.2	419	1
STCK524	POINT	318715.28	4431567.82	267.37	2.06	0.35	2.2	419	1
STCK525	POINT	318716.37	4431567.71	267.38	2.06	0.35	2.2	419	1
STCK526	POINT	318717.48	4431567.58	267.38	2.06	0.35	2.2	419	1
STCK527	POINT	318711.98	4431568.15	267.37	2.06	0.35	2.2	419	1
STCK528	POINT	318713.12	4431567.99	267.37	2.06	0.35	2.2	419	1
STCK529	POINT	318715.13	4431577.75	267.46	2.06	0.35	2.2	419	1
STCK530	POINT	318716.29	4431577.67	267.48	2.06	0.35	2.2	419	1
STCK531	POINT	318717.38	4431577.56	267.50	2.06	0.35	2.2	419	1
STCK532	POINT	318718.48	4431577.42	267.51	2.06	0.35	2.2	419	1
STCK533	POINT	318712.99	4431577.99	267.42	2.06	0.35	2.2	419	1
STCK534	POINT	318714.13	4431577.84	267.44	2.06	0.35	2.2	419	1
STCK535	POINT	318728.76	4431576.20	267.46	2.06	0.35	2.2	419	1
STCK536	POINT	318729.92	4431576.11	267.43	2.06	0.35	2.2	419	1
STCK537	POINT	318731.01	4431576.00	267.41	2.06	0.35	2.2	419	1
STCK538	POINT	318732.12	4431575.87	267.38	2.06	0.35	2.2	419	1
STCK539	POINT	318726.62	4431576.44	267.52	2.06	0.35	2.2	419	1
STCK540	POINT	318727.77	4431576.28	267.49	2.06	0.35	2.2	419	1
STCK541	POINT	318728.15	4431571.28	267.40	2.06	0.35	2.2	419	1
STCK542	POINT	318729.30	4431571.19	267.38	2.06	0.35	2.2	419	1
STCK543	POINT	318730.40	4431571.08	267.35	2.06	0.35	2.2	419	1
STCK544	POINT	318731.50	4431570.95	267.32	2.06	0.35	2.2	419	1
STCK545	POINT	318726.01	4431571.52	267.46	2.06	0.35	2.2	419	1
STCK546	POINT	318727.15	4431571.36	267.43	2.06	0.35	2.2	419	1
STCK547	POINT	318730.00	4431587.89	267.59	2.06	0.35	2.2	419	1
STCK548	POINT	318731.16	4431587.80	267.56	2.06	0.35	2.2	419	1
STCK549	POINT	318732.26	4431587.69	267.53	2.06	0.35	2.2	419	1
STCK550	POINT	318733.36	4431587.55	267.50	2.06	0.35	2.2	419	1
STCK551	POINT	318727.86	4431588.12	267.65	2.06	0.35	2.2	419	1
STCK552	POINT	318729.01	4431587.97	267.62	2.06	0.35	2.2	419	1
STCK553	POINT	318734.24	4431585.60	267.46	2.06	0.35	2.2	419	1
STCK554	POINT	318735.34	4431585.47	267.46	2.06	0.35	2.2	419	1
STCK555	POINT	318716.48	4431589.39	267.62	2.06	0.35	2.2	419	1
STCK556	POINT	318717.64	4431589.31	267.65	2.06	0.35	2.2	419	1
STCK557	POINT	318718.73	4431589.20	267.67	2.06	0.35	2.2	419	1
STCK558	POINT	318719.83	4431589.06	267.67	2.06	0.35	2.2	419	1
STCK559	POINT	318714.34	4431589.63	267.56	2.06	0.35	2.2	419	1
STCK560	POINT	318715.48	4431589.48	267.59	2.06	0.35	2.2	419	1
STCK561	POINT	318717.50	4431599.32	267.74	2.06	0.35	2.2	419	1
STCK562	POINT	318718.66	4431599.23	267.78	2.06	0.35	2.2	419	1
STCK563	POINT	318719.75	4431599.12	267.77	2.06	0.35	2.2	419	1
STCK564	POINT	318720.86	4431598.99	267.76	2.06	0.35	2.2	419	1
STCK565	POINT	318715.36	4431599.56	267.67	2.06	0.35	2.2	419	1
STCK566	POINT	318716.51	4431599.40	267.71	2.06	0.35	2.2	419	1
STCK567	POINT	318731.10	4431597.69	267.60	2.06	0.35	2.2	419	1
STCK568	POINT	318732.26	4431597.60	267.57	2.06	0.35	2.2	419	1
STCK569	POINT	318733.35	4431597.49	267.54	2.06	0.35	2.2	419	1
STCK570	POINT	318734.46	4431597.36	267.52	2.06	0.35	2.2	419	1
STCK571	POINT	318728.96	4431597.93	267.65	2.06	0.35	2.2	419	1
STCK572	POINT	318730.11	4431597.77	267.62	2.06	0.35	2.2	419	1
STCK573	POINT	318730.45	4431592.78	267.60	2.06	0.35	2.2	419	1
STCK574	POINT	318731.60	4431592.69	267.57	2.06	0.35	2.2	419	1
STCK575	POINT	318732.70	4431592.58	267.54	2.06	0.35	2.2	419	1
STCK576	POINT	318733.80	4431592.44	267.51	2.06	0.35	2.2	419	1

STCK577	POINT	318728.31	4431593.01	267.66	2.06	0.35	2.2	419	1
STCK578	POINT	318729.45	4431592.86	267.63	2.06	0.35	2.2	419	1
STCK579	POINT	318731.51	4431602.75	267.57	2.06	0.35	2.2	419	1
STCK580	POINT	318732.67	4431602.67	267.54	2.06	0.35	2.2	419	1
STCK581	POINT	318733.77	4431602.56	267.52	2.06	0.35	2.2	419	1
STCK582	POINT	318734.87	4431602.42	267.50	2.06	0.35	2.2	419	1
STCK583	POINT	318729.38	4431602.99	267.62	2.06	0.35	2.2	419	1
STCK584	POINT	318730.52	4431602.84	267.59	2.06	0.35	2.2	419	1
STCK585	POINT	318735.84	4431600.33	267.51	2.06	0.35	2.2	419	1
STCK586	POINT	318736.94	4431600.20	267.51	2.06	0.35	2.2	419	1
STCK587	POINT	318718.15	4431604.28	267.78	2.06	0.35	2.2	419	1
STCK588	POINT	318719.31	4431604.19	267.79	2.06	0.35	2.2	419	1
STCK589	POINT	318720.41	4431604.08	267.77	2.06	0.35	2.2	419	1
STCK590	POINT	318721.51	4431603.95	267.75	2.06	0.35	2.2	419	1
STCK591	POINT	318716.02	4431604.52	267.71	2.06	0.35	2.2	419	1
STCK592	POINT	318717.16	4431604.36	267.75	2.06	0.35	2.2	419	1
STCK593	POINT	318719.26	4431613.97	267.80	2.06	0.35	2.2	419	1
STCK594	POINT	318720.42	4431613.88	267.77	2.06	0.35	2.2	419	1
STCK595	POINT	318721.51	4431613.77	267.75	2.06	0.35	2.2	419	1
STCK596	POINT	318722.61	4431613.63	267.72	2.06	0.35	2.2	419	1
STCK597	POINT	318717.12	4431614.20	267.76	2.06	0.35	2.2	419	1
STCK598	POINT	318718.26	4431614.05	267.80	2.06	0.35	2.2	419	1
STCK599	POINT	318732.62	4431612.41	267.51	2.06	0.35	2.2	419	1
STCK600	POINT	318733.78	4431612.32	267.48	2.06	0.35	2.2	419	1
STCK601	POINT	318734.87	4431612.21	267.47	2.06	0.35	2.2	419	1
STCK602	POINT	318735.98	4431612.08	267.47	2.06	0.35	2.2	419	1
STCK603	POINT	318730.49	4431612.65	267.55	2.06	0.35	2.2	419	1
STCK604	POINT	318731.63	4431612.49	267.52	2.06	0.35	2.2	419	1
STCK605	POINT	318732.12	4431607.63	267.54	2.06	0.35	2.2	419	1
STCK606	POINT	318733.27	4431607.55	267.51	2.06	0.35	2.2	419	1
STCK607	POINT	318734.37	4431607.44	267.49	2.06	0.35	2.2	419	1
STCK608	POINT	318735.47	4431607.30	267.49	2.06	0.35	2.2	419	1
STCK609	POINT	318729.98	4431607.87	267.58	2.06	0.35	2.2	419	1
STCK610	POINT	318731.12	4431607.72	267.56	2.06	0.35	2.2	419	1
STCK611	POINT	318733.84	4431624.15	267.44	2.06	0.35	2.2	419	1
STCK612	POINT	318735.00	4431624.07	267.42	2.06	0.35	2.2	419	1
STCK613	POINT	318736.09	4431623.96	267.42	2.06	0.35	2.2	419	1
STCK614	POINT	318737.20	4431623.82	267.42	2.06	0.35	2.2	419	1
STCK615	POINT	318731.70	4431624.39	267.47	2.06	0.35	2.2	419	1
STCK616	POINT	318732.84	4431624.24	267.45	2.06	0.35	2.2	419	1
STCK617	POINT	318738.26	4431621.96	267.43	2.06	0.35	2.2	419	1
STCK618	POINT	318739.36	4431621.83	267.43	2.06	0.35	2.2	419	1
STCK619	POINT	318720.39	4431625.71	267.75	2.06	0.35	2.2	419	1
STCK620	POINT	318721.55	4431625.62	267.71	2.06	0.35	2.2	419	1
STCK621	POINT	318722.64	4431625.51	267.67	2.06	0.35	2.2	419	1
STCK622	POINT	318723.74	4431625.37	267.64	2.06	0.35	2.2	419	1
STCK623	POINT	318718.25	4431625.94	267.77	2.06	0.35	2.2	419	1
STCK624	POINT	318719.40	4431625.79	267.78	2.06	0.35	2.2	419	1
STCK625	POINT	318721.38	4431635.48	267.68	2.06	0.35	2.2	419	1
STCK626	POINT	318722.54	4431635.39	267.64	2.06	0.35	2.2	419	1
STCK627	POINT	318723.63	4431635.29	267.60	2.06	0.35	2.2	419	1
STCK628	POINT	318724.73	4431635.15	267.56	2.06	0.35	2.2	419	1
STCK629	POINT	318719.24	4431635.72	267.75	2.06	0.35	2.2	419	1
STCK630	POINT	318720.38	4431635.56	267.71	2.06	0.35	2.2	419	1
STCK631	POINT	318735.03	4431633.91	267.39	2.06	0.35	2.2	419	1
STCK632	POINT	318736.19	4431633.82	267.39	2.06	0.35	2.2	419	1
STCK633	POINT	318737.28	4431633.71	267.39	2.06	0.35	2.2	419	1
STCK634	POINT	318738.39	4431633.58	267.38	2.06	0.35	2.2	419	1

STCK635	POINT	318732.89	4431634.14	267.41	2.06	0.35	2.2	419	1
STCK636	POINT	318734.04	4431633.99	267.40	2.06	0.35	2.2	419	1
STCK637	POINT	318734.49	4431629.12	267.41	2.06	0.35	2.2	419	1
STCK638	POINT	318735.65	4431629.04	267.40	2.06	0.35	2.2	419	1
STCK639	POINT	318736.75	4431628.93	267.40	2.06	0.35	2.2	419	1
STCK640	POINT	318737.85	4431628.79	267.40	2.06	0.35	2.2	419	1
STCK641	POINT	318732.36	4431629.36	267.44	2.06	0.35	2.2	419	1
STCK642	POINT	318733.50	4431629.21	267.42	2.06	0.35	2.2	419	1
STCK643	POINT	318722.02	4431640.03	267.64	2.06	0.35	2.2	419	1
STCK644	POINT	318723.18	4431639.94	267.59	2.06	0.35	2.2	419	1
STCK645	POINT	318724.27	4431639.83	267.55	2.06	0.35	2.2	419	1
STCK646	POINT	318725.38	4431639.70	267.51	2.06	0.35	2.2	419	1
STCK647	POINT	318719.88	4431640.27	267.72	2.06	0.35	2.2	419	1
STCK648	POINT	318721.03	4431640.11	267.67	2.06	0.35	2.2	419	1
STCK649	POINT	318722.49	4431644.57	267.61	2.06	0.35	2.2	419	1
STCK650	POINT	318723.65	4431644.49	267.57	2.06	0.35	2.2	419	1
STCK651	POINT	318724.74	4431644.38	267.53	2.06	0.35	2.2	419	1
STCK652	POINT	318725.85	4431644.24	267.49	2.06	0.35	2.2	419	1
STCK653	POINT	318720.36	4431644.81	267.68	2.06	0.35	2.2	419	1
STCK654	POINT	318721.50	4431644.66	267.64	2.06	0.35	2.2	419	1
STCK655	POINT	318735.49	4431638.55	267.38	2.06	0.35	2.2	419	1
STCK656	POINT	318736.65	4431638.46	267.38	2.06	0.35	2.2	419	1
STCK657	POINT	318737.74	4431638.35	267.37	2.06	0.35	2.2	419	1
STCK658	POINT	318738.85	4431638.22	267.37	2.06	0.35	2.2	419	1
STCK659	POINT	318733.35	4431638.79	267.40	2.06	0.35	2.2	419	1
STCK660	POINT	318734.50	4431638.63	267.39	2.06	0.35	2.2	419	1
STCK661	POINT	318736.49	4431647.99	267.40	2.06	0.35	2.2	419	1
STCK662	POINT	318737.65	4431647.91	267.39	2.06	0.35	2.2	419	1
STCK663	POINT	318738.74	4431647.80	267.39	2.06	0.35	2.2	419	1
STCK664	POINT	318739.85	4431647.66	267.38	2.06	0.35	2.2	419	1
STCK665	POINT	318734.35	4431648.23	267.41	2.06	0.35	2.2	419	1
STCK666	POINT	318735.50	4431648.08	267.41	2.06	0.35	2.2	419	1
STCK667	POINT	318723.05	4431649.54	267.57	2.06	0.35	2.2	419	1
STCK668	POINT	318724.21	4431649.45	267.54	2.06	0.35	2.2	419	1
STCK669	POINT	318725.30	4431649.34	267.50	2.06	0.35	2.2	419	1
STCK670	POINT	318726.41	4431649.21	267.47	2.06	0.35	2.2	419	1
STCK671	POINT	318720.92	4431649.77	267.64	2.06	0.35	2.2	419	1
STCK672	POINT	318722.06	4431649.62	267.61	2.06	0.35	2.2	419	1
STCK673	POINT	318724.33	4431660.82	267.58	2.06	0.35	2.2	419	1
STCK674	POINT	318725.49	4431660.73	267.55	2.06	0.35	2.2	419	1
STCK675	POINT	318726.58	4431660.62	267.52	2.06	0.35	2.2	419	1
STCK676	POINT	318727.69	4431660.49	267.49	2.06	0.35	2.2	419	1
STCK677	POINT	318722.20	4431661.06	267.64	2.06	0.35	2.2	419	1
STCK678	POINT	318723.34	4431660.90	267.61	2.06	0.35	2.2	419	1
STCK679	POINT	318737.77	4431659.37	267.48	2.06	0.35	2.2	419	1
STCK680	POINT	318738.93	4431659.28	267.48	2.06	0.35	2.2	419	1
STCK681	POINT	318740.03	4431659.17	267.47	2.06	0.35	2.2	419	1
STCK682	POINT	318741.13	4431659.04	267.46	2.06	0.35	2.2	419	1
STCK683	POINT	318735.64	4431659.61	267.50	2.06	0.35	2.2	419	1
STCK684	POINT	318736.78	4431659.45	267.49	2.06	0.35	2.2	419	1
STCK685	POINT	318738.33	4431664.18	267.51	2.06	0.35	2.2	419	1
STCK686	POINT	318739.48	4431664.09	267.50	2.06	0.35	2.2	419	1
STCK687	POINT	318740.58	4431663.98	267.49	2.06	0.35	2.2	419	1
STCK688	POINT	318741.68	4431663.85	267.48	2.06	0.35	2.2	419	1
STCK689	POINT	318736.19	4431664.42	267.52	2.06	0.35	2.2	419	1
STCK690	POINT	318737.33	4431664.26	267.51	2.06	0.35	2.2	419	1
STCK691	POINT	318725.41	4431670.29	267.60	2.06	0.35	2.2	419	1
STCK692	POINT	318726.57	4431670.20	267.57	2.06	0.35	2.2	419	1

STCK693	POINT	318727.66	4431670.09	267.55	2.06	0.35	2.2	419	1
STCK694	POINT	318728.77	4431669.96	267.54	2.06	0.35	2.2	419	1
STCK695	POINT	318723.27	4431670.53	267.64	2.06	0.35	2.2	419	1
STCK696	POINT	318724.42	4431670.37	267.62	2.06	0.35	2.2	419	1
STCK697	POINT	318738.89	4431668.74	267.53	2.06	0.35	2.2	419	1
STCK698	POINT	318740.04	4431668.65	267.52	2.06	0.35	2.2	419	1
STCK699	POINT	318741.14	4431668.54	267.51	2.06	0.35	2.2	419	1
STCK700	POINT	318742.24	4431668.41	267.50	2.06	0.35	2.2	419	1
STCK701	POINT	318736.75	4431668.97	267.54	2.06	0.35	2.2	419	1
STCK702	POINT	318737.89	4431668.82	267.53	2.06	0.35	2.2	419	1
STCK703	POINT	318725.85	4431674.91	267.59	2.06	0.35	2.2	419	1
STCK704	POINT	318727.00	4431674.82	267.57	2.06	0.35	2.2	419	1
STCK705	POINT	318728.10	4431674.71	267.55	2.06	0.35	2.2	419	1
STCK706	POINT	318729.20	4431674.58	267.55	2.06	0.35	2.2	419	1
STCK707	POINT	318723.71	4431675.14	267.62	2.06	0.35	2.2	419	1
STCK708	POINT	318724.85	4431674.99	267.60	2.06	0.35	2.2	419	1
STCK709	POINT	318739.36	4431673.38	267.52	2.06	0.35	2.2	419	1
STCK710	POINT	318740.52	4431673.29	267.51	2.06	0.35	2.2	419	1
STCK711	POINT	318741.62	4431673.18	267.50	2.06	0.35	2.2	419	1
STCK712	POINT	318742.72	4431673.05	267.49	2.06	0.35	2.2	419	1
STCK713	POINT	318737.23	4431673.62	267.54	2.06	0.35	2.2	419	1
STCK714	POINT	318738.37	4431673.46	267.53	2.06	0.35	2.2	419	1
STCK715	POINT	318739.92	4431678.27	267.51	2.06	0.35	2.2	419	1
STCK716	POINT	318741.07	4431678.18	267.50	2.06	0.35	2.2	419	1
STCK717	POINT	318742.17	4431678.07	267.49	2.06	0.35	2.2	419	1
STCK718	POINT	318743.27	4431677.94	267.48	2.06	0.35	2.2	419	1
STCK719	POINT	318737.78	4431678.50	267.53	2.06	0.35	2.2	419	1
STCK720	POINT	318738.92	4431678.35	267.52	2.06	0.35	2.2	419	1
STCK721	POINT	318726.89	4431684.30	267.57	2.06	0.35	2.2	419	1
STCK722	POINT	318728.04	4431684.21	267.56	2.06	0.35	2.2	419	1
STCK723	POINT	318729.14	4431684.10	267.55	2.06	0.35	2.2	419	1
STCK724	POINT	318730.24	4431683.97	267.55	2.06	0.35	2.2	419	1
STCK725	POINT	318724.75	4431684.54	267.59	2.06	0.35	2.2	419	1
STCK726	POINT	318725.89	4431684.38	267.58	2.06	0.35	2.2	419	1
STCK727	POINT	318740.36	4431682.82	267.51	2.06	0.35	2.2	419	1
STCK728	POINT	318741.52	4431682.74	267.49	2.06	0.35	2.2	419	1
STCK729	POINT	318742.62	4431682.63	267.48	2.06	0.35	2.2	419	1
STCK730	POINT	318743.72	4431682.49	267.47	2.06	0.35	2.2	419	1
STCK731	POINT	318738.23	4431683.06	267.53	2.06	0.35	2.2	419	1
STCK732	POINT	318739.37	4431682.91	267.52	2.06	0.35	2.2	419	1
STCK733	POINT	318727.79	4431692.84	267.56	2.06	0.35	2.2	419	1
STCK734	POINT	318728.95	4431692.75	267.56	2.06	0.35	2.2	419	1
STCK735	POINT	318730.04	4431692.64	267.56	2.06	0.35	2.2	419	1
STCK736	POINT	318731.14	4431692.51	267.55	2.06	0.35	2.2	419	1
STCK737	POINT	318725.65	4431693.08	267.58	2.06	0.35	2.2	419	1
STCK738	POINT	318726.80	4431692.92	267.57	2.06	0.35	2.2	419	1
STCK739	POINT	318741.31	4431691.31	267.50	2.06	0.35	2.2	419	1
STCK740	POINT	318742.47	4431691.22	267.49	2.06	0.35	2.2	419	1
STCK741	POINT	318743.56	4431691.11	267.49	2.06	0.35	2.2	419	1
STCK742	POINT	318744.66	4431690.98	267.48	2.06	0.35	2.2	419	1
STCK743	POINT	318739.17	4431691.55	267.52	2.06	0.35	2.2	419	1
STCK744	POINT	318740.31	4431691.39	267.51	2.06	0.35	2.2	419	1
STCK745	POINT	318741.90	4431696.23	267.54	2.06	0.35	2.2	419	1
STCK746	POINT	318743.06	4431696.14	267.53	2.06	0.35	2.2	419	1
STCK747	POINT	318744.15	4431696.03	267.52	2.06	0.35	2.2	419	1
STCK748	POINT	318745.26	4431695.90	267.52	2.06	0.35	2.2	419	1
STCK749	POINT	318739.76	4431696.46	267.55	2.06	0.35	2.2	419	1
STCK750	POINT	318740.91	4431696.31	267.54	2.06	0.35	2.2	419	1

STCK751	POINT	318728.95	4431702.70	267.60	2.06	0.35	2.2	419	1
STCK752	POINT	318730.10	4431702.61	267.60	2.06	0.35	2.2	419	1
STCK753	POINT	318731.20	4431702.50	267.60	2.06	0.35	2.2	419	1
STCK754	POINT	318732.30	4431702.37	267.60	2.06	0.35	2.2	419	1
STCK755	POINT	318726.81	4431702.94	267.60	2.06	0.35	2.2	419	1
STCK756	POINT	318727.95	4431702.78	267.60	2.06	0.35	2.2	419	1
STCK757	POINT	318742.44	4431701.24	267.57	2.06	0.35	2.2	419	1
STCK758	POINT	318743.59	4431701.15	267.57	2.06	0.35	2.2	419	1
STCK759	POINT	318744.69	4431701.04	267.56	2.06	0.35	2.2	419	1
STCK760	POINT	318745.79	4431700.91	267.56	2.06	0.35	2.2	419	1
STCK761	POINT	318740.30	4431701.48	267.58	2.06	0.35	2.2	419	1
STCK762	POINT	318741.44	4431701.32	267.58	2.06	0.35	2.2	419	1
STCK763	POINT	318649.35	4431572.85	267.97	2.06	0.35	2.2	419	1
STCK764	POINT	318650.54	4431572.74	267.96	2.06	0.35	2.2	419	1
STCK765	POINT	318651.68	4431572.58	267.96	2.06	0.35	2.2	419	1
STCK766	POINT	318652.72	4431572.49	267.95	2.06	0.35	2.2	419	1
STCK767	POINT	318653.81	4431572.37	267.95	2.06	0.35	2.2	419	1
STCK768	POINT	318654.91	4431572.24	267.94	2.06	0.35	2.2	419	1
STCK769	POINT	318666.27	4431570.81	267.73	2.06	0.35	2.2	419	1
STCK770	POINT	318667.43	4431570.72	267.70	2.06	0.35	2.2	419	1
STCK771	POINT	318668.52	4431570.62	267.67	2.06	0.35	2.2	419	1
STCK772	POINT	318669.62	4431570.48	267.64	2.06	0.35	2.2	419	1
STCK773	POINT	318663.07	4431571.21	267.82	2.06	0.35	2.2	419	1
STCK774	POINT	318664.13	4431571.05	267.79	2.06	0.35	2.2	419	1
STCK775	POINT	318665.28	4431570.89	267.76	2.06	0.35	2.2	419	1
STCK776	POINT	318650.03	4431577.77	268.00	2.06	0.35	2.2	419	1
STCK777	POINT	318651.21	4431577.65	267.99	2.06	0.35	2.2	419	1
STCK778	POINT	318652.35	4431577.50	267.98	2.06	0.35	2.2	419	1
STCK779	POINT	318653.39	4431577.40	267.97	2.06	0.35	2.2	419	1
STCK780	POINT	318654.48	4431577.28	267.96	2.06	0.35	2.2	419	1
STCK781	POINT	318655.58	4431577.15	267.95	2.06	0.35	2.2	419	1
STCK782	POINT	318650.54	4431582.56	268.01	2.06	0.35	2.2	419	1
STCK783	POINT	318651.72	4431582.44	268.00	2.06	0.35	2.2	419	1
STCK784	POINT	318652.86	4431582.29	267.99	2.06	0.35	2.2	419	1
STCK785	POINT	318653.91	4431582.19	267.98	2.06	0.35	2.2	419	1
STCK786	POINT	318654.99	4431582.07	267.97	2.06	0.35	2.2	419	1
STCK787	POINT	318656.09	4431581.94	267.96	2.06	0.35	2.2	419	1
STCK788	POINT	318664.10	4431581.01	267.84	2.06	0.35	2.2	419	1
STCK789	POINT	318665.29	4431580.89	267.82	2.06	0.35	2.2	419	1
STCK790	POINT	318666.43	4431580.74	267.81	2.06	0.35	2.2	419	1
STCK791	POINT	318667.47	4431580.64	267.79	2.06	0.35	2.2	419	1
STCK792	POINT	318668.56	4431580.52	267.77	2.06	0.35	2.2	419	1
STCK793	POINT	318669.66	4431580.39	267.76	2.06	0.35	2.2	419	1
STCK794	POINT	318652.38	4431599.07	268.07	2.06	0.35	2.2	419	1
STCK795	POINT	318653.56	4431598.96	268.06	2.06	0.35	2.2	419	1
STCK796	POINT	318654.71	4431598.80	268.05	2.06	0.35	2.2	419	1
STCK797	POINT	318655.75	4431598.70	268.04	2.06	0.35	2.2	419	1
STCK798	POINT	318656.83	4431598.59	268.02	2.06	0.35	2.2	419	1
STCK799	POINT	318657.94	4431598.45	268.01	2.06	0.35	2.2	419	1
STCK800	POINT	318665.94	4431597.43	267.90	2.06	0.35	2.2	419	1
STCK801	POINT	318667.12	4431597.31	267.88	2.06	0.35	2.2	419	1
STCK802	POINT	318668.26	4431597.16	267.87	2.06	0.35	2.2	419	1
STCK803	POINT	318669.31	4431597.06	267.86	2.06	0.35	2.2	419	1
STCK804	POINT	318670.39	4431596.94	267.85	2.06	0.35	2.2	419	1
STCK805	POINT	318671.50	4431596.81	267.84	2.06	0.35	2.2	419	1
STCK806	POINT	318652.91	4431604.02	268.10	2.06	0.35	2.2	419	1
STCK807	POINT	318654.09	4431603.90	268.09	2.06	0.35	2.2	419	1
STCK808	POINT	318655.23	4431603.75	268.08	2.06	0.35	2.2	419	1

STCK809	POINT	318656.27	4431603.65	268.07	2.06	0.35	2.2	419	1
STCK810	POINT	318657.36	4431603.53	268.04	2.06	0.35	2.2	419	1
STCK811	POINT	318658.46	4431603.40	268.02	2.06	0.35	2.2	419	1
STCK812	POINT	318653.41	4431608.81	268.13	2.06	0.35	2.2	419	1
STCK813	POINT	318654.59	4431608.69	268.12	2.06	0.35	2.2	419	1
STCK814	POINT	318655.74	4431608.54	268.11	2.06	0.35	2.2	419	1
STCK815	POINT	318656.78	4431608.44	268.09	2.06	0.35	2.2	419	1
STCK816	POINT	318657.86	4431608.33	268.07	2.06	0.35	2.2	419	1
STCK817	POINT	318658.97	4431608.19	268.04	2.06	0.35	2.2	419	1
STCK818	POINT	318668.06	4431607.26	267.89	2.06	0.35	2.2	419	1
STCK819	POINT	318669.24	4431607.15	267.88	2.06	0.35	2.2	419	1
STCK820	POINT	318670.39	4431606.99	267.87	2.06	0.35	2.2	419	1
STCK821	POINT	318671.43	4431606.90	267.85	2.06	0.35	2.2	419	1
STCK822	POINT	318672.52	4431606.78	267.84	2.06	0.35	2.2	419	1
STCK823	POINT	318673.62	4431606.64	267.82	2.06	0.35	2.2	419	1
STCK824	POINT	318667.01	4431607.37	267.91	2.06	0.35	2.2	419	1
STCK825	POINT	318655.98	4431621.41	268.15	2.06	0.35	2.2	419	1
STCK826	POINT	318657.16	4431621.30	268.13	2.06	0.35	2.2	419	1
STCK827	POINT	318658.30	4431621.14	268.10	2.06	0.35	2.2	419	1
STCK828	POINT	318659.35	4431621.04	268.08	2.06	0.35	2.2	419	1
STCK829	POINT	318660.43	4431620.93	268.05	2.06	0.35	2.2	419	1
STCK830	POINT	318655.19	4431624.54	268.18	2.06	0.35	2.2	419	1
STCK831	POINT	318656.37	4431624.43	268.16	2.06	0.35	2.2	419	1
STCK832	POINT	318657.52	4431624.27	268.13	2.06	0.35	2.2	419	1
STCK833	POINT	318658.56	4431624.17	268.11	2.06	0.35	2.2	419	1
STCK834	POINT	318659.64	4431624.06	268.08	2.06	0.35	2.2	419	1
STCK835	POINT	318660.75	4431623.92	268.05	2.06	0.35	2.2	419	1
STCK836	POINT	318658.32	4431653.41	268.08	2.06	0.35	2.2	419	1
STCK837	POINT	318659.50	4431653.29	268.06	2.06	0.35	2.2	419	1
STCK838	POINT	318660.65	4431653.14	268.05	2.06	0.35	2.2	419	1
STCK839	POINT	318661.69	4431653.04	268.03	2.06	0.35	2.2	419	1
STCK840	POINT	318662.78	4431652.92	268.02	2.06	0.35	2.2	419	1
STCK841	POINT	318663.88	4431652.79	268.01	2.06	0.35	2.2	419	1
STCK842	POINT	318672.03	4431653.45	267.84	2.06	0.35	2.2	419	1
STCK843	POINT	318673.21	4431653.34	267.82	2.06	0.35	2.2	419	1
STCK844	POINT	318674.35	4431653.18	267.79	2.06	0.35	2.2	419	1
STCK845	POINT	318675.39	4431653.08	267.77	2.06	0.35	2.2	419	1
STCK846	POINT	318676.48	4431652.97	267.75	2.06	0.35	2.2	419	1
STCK847	POINT	318677.58	4431652.83	267.73	2.06	0.35	2.2	419	1
STCK848	POINT	318660.87	4431676.56	267.87	2.06	0.35	2.2	419	1
STCK849	POINT	318662.05	4431676.44	267.86	2.06	0.35	2.2	419	1
STCK850	POINT	318663.20	4431676.29	267.85	2.06	0.35	2.2	419	1
STCK851	POINT	318664.24	4431676.19	267.85	2.06	0.35	2.2	419	1
STCK852	POINT	318665.32	4431676.07	267.84	2.06	0.35	2.2	419	1
STCK853	POINT	318666.43	4431675.94	267.84	2.06	0.35	2.2	419	1
STCK854	POINT	318661.45	4431681.34	267.83	2.06	0.35	2.2	419	1
STCK855	POINT	318662.63	4431681.23	267.82	2.06	0.35	2.2	419	1
STCK856	POINT	318663.77	4431681.07	267.81	2.06	0.35	2.2	419	1
STCK857	POINT	318664.81	4431680.97	267.80	2.06	0.35	2.2	419	1
STCK858	POINT	318665.90	4431680.86	267.80	2.06	0.35	2.2	419	1
STCK859	POINT	318667.00	4431680.72	267.79	2.06	0.35	2.2	419	1
STCK860	POINT	318661.91	4431686.24	267.79	2.06	0.35	2.2	419	1
STCK861	POINT	318663.09	4431686.13	267.77	2.06	0.35	2.2	419	1
STCK862	POINT	318664.23	4431685.97	267.76	2.06	0.35	2.2	419	1
STCK863	POINT	318665.28	4431685.88	267.75	2.06	0.35	2.2	419	1
STCK864	POINT	318666.36	4431685.76	267.75	2.06	0.35	2.2	419	1
STCK865	POINT	318667.46	4431685.62	267.75	2.06	0.35	2.2	419	1
STCK866	POINT	318675.56	4431684.82	267.68	2.06	0.35	2.2	419	1

STCK867	POINT	318676.74	4431684.71	267.66	2.06	0.35	2.2	419	1
STCK868	POINT	318677.89	4431684.55	267.63	2.06	0.35	2.2	419	1
STCK869	POINT	318678.93	4431684.45	267.61	2.06	0.35	2.2	419	1
STCK870	POINT	318680.01	4431684.34	267.58	2.06	0.35	2.2	419	1
STCK871	POINT	318681.12	4431684.20	267.56	2.06	0.35	2.2	419	1
STCK872	POINT	318663.71	4431702.62	267.62	2.06	0.35	2.2	419	1
STCK873	POINT	318664.89	4431702.51	267.61	2.06	0.35	2.2	419	1
STCK874	POINT	318666.03	4431702.35	267.60	2.06	0.35	2.2	419	1
STCK875	POINT	318667.08	4431702.25	267.60	2.06	0.35	2.2	419	1
STCK876	POINT	318668.16	4431702.14	267.59	2.06	0.35	2.2	419	1
STCK877	POINT	318669.26	4431702.00	267.59	2.06	0.35	2.2	419	1
STCK878	POINT	318677.32	4431701.10	267.55	2.06	0.35	2.2	419	1
STCK879	POINT	318678.50	4431700.98	267.54	2.06	0.35	2.2	419	1
STCK880	POINT	318679.64	4431700.83	267.53	2.06	0.35	2.2	419	1
STCK881	POINT	318680.69	4431700.73	267.52	2.06	0.35	2.2	419	1
STCK882	POINT	318681.77	4431700.61	267.51	2.06	0.35	2.2	419	1
STCK883	POINT	318682.88	4431700.48	267.50	2.06	0.35	2.2	419	1
STCK884	POINT	318664.16	4431707.65	267.59	2.06	0.35	2.2	419	1
STCK885	POINT	318665.34	4431707.54	267.57	2.06	0.35	2.2	419	1
STCK886	POINT	318666.48	4431707.38	267.56	2.06	0.35	2.2	419	1
STCK887	POINT	318667.52	4431707.28	267.56	2.06	0.35	2.2	419	1
STCK888	POINT	318668.61	4431707.17	267.55	2.06	0.35	2.2	419	1
STCK889	POINT	318669.71	4431707.03	267.55	2.06	0.35	2.2	419	1
STCK890	POINT	318664.83	4431712.49	267.55	2.06	0.35	2.2	419	1
STCK891	POINT	318666.02	4431712.38	267.53	2.06	0.35	2.2	419	1
STCK892	POINT	318667.16	4431712.22	267.53	2.06	0.35	2.2	419	1
STCK893	POINT	318668.20	4431712.13	267.52	2.06	0.35	2.2	419	1
STCK894	POINT	318669.29	4431712.01	267.52	2.06	0.35	2.2	419	1
STCK895	POINT	318670.39	4431711.88	267.51	2.06	0.35	2.2	419	1
STCK896	POINT	318679.51	4431710.88	267.48	2.06	0.35	2.2	419	1
STCK897	POINT	318680.69	4431710.76	267.48	2.06	0.35	2.2	419	1
STCK898	POINT	318681.83	4431710.60	267.47	2.06	0.35	2.2	419	1
STCK899	POINT	318682.87	4431710.51	267.47	2.06	0.35	2.2	419	1
STCK900	POINT	318683.96	4431710.39	267.46	2.06	0.35	2.2	419	1
STCK901	POINT	318685.06	4431710.25	267.45	2.06	0.35	2.2	419	1
STCK902	POINT	318678.45	4431711.02	267.48	2.06	0.35	2.2	419	1
STCK903	POINT	318675.56	4431674.79	267.75	2.06	0.35	2.2	419	1
STCK904	POINT	318676.74	4431674.68	267.72	2.06	0.35	2.2	419	1
STCK905	POINT	318677.89	4431674.52	267.69	2.06	0.35	2.2	419	1
STCK906	POINT	318678.93	4431674.42	267.66	2.06	0.35	2.2	419	1
STCK907	POINT	318680.02	4431674.31	267.63	2.06	0.35	2.2	419	1
STCK908	POINT	318681.12	4431674.17	267.61	2.06	0.35	2.2	419	1
STCK909	POINT	318674.51	4431674.94	267.78	2.06	0.35	2.2	419	1
STCK910	POINT	318663.81	4431662.56	267.99	2.06	0.35	2.2	419	1
STCK911	POINT	318664.96	4431662.47	267.98	2.06	0.35	2.2	419	1
STCK912	POINT	318660.61	4431662.95	267.99	2.06	0.35	2.2	419	1
STCK913	POINT	318661.67	4431662.80	267.99	2.06	0.35	2.2	419	1
STCK914	POINT	318662.81	4431662.64	267.99	2.06	0.35	2.2	419	1
STCK915	POINT	318695.71	4431568.17	267.41	2.06	0.35	2.2	419	1
STCK916	POINT	318696.86	4431568.08	267.41	2.06	0.35	2.2	419	1
STCK917	POINT	318697.96	4431567.97	267.41	2.06	0.35	2.2	419	1
STCK918	POINT	318699.06	4431567.84	267.41	2.06	0.35	2.2	419	1
STCK919	POINT	318693.57	4431568.41	267.42	2.06	0.35	2.2	419	1
STCK920	POINT	318694.71	4431568.25	267.42	2.06	0.35	2.2	419	1
STCK921	POINT	318682.23	4431569.67	267.53	2.06	0.35	2.2	419	1
STCK922	POINT	318683.39	4431569.58	267.52	2.06	0.35	2.2	419	1
STCK923	POINT	318684.49	4431569.47	267.51	2.06	0.35	2.2	419	1
STCK924	POINT	318685.59	4431569.34	267.49	2.06	0.35	2.2	419	1

STCK925	POINT	318680.10	4431569.91	267.55	2.06	0.35	2.2	419	1
STCK926	POINT	318681.24	4431569.75	267.54	2.06	0.35	2.2	419	1
STCK927	POINT	318696.32	4431572.91	267.46	2.06	0.35	2.2	419	1
STCK928	POINT	318697.48	4431572.82	267.45	2.06	0.35	2.2	419	1
STCK929	POINT	318698.57	4431572.71	267.44	2.06	0.35	2.2	419	1
STCK930	POINT	318699.68	4431572.58	267.44	2.06	0.35	2.2	419	1
STCK931	POINT	318694.18	4431573.15	267.48	2.06	0.35	2.2	419	1
STCK932	POINT	318695.33	4431572.99	267.47	2.06	0.35	2.2	419	1
STCK933	POINT	318683.34	4431579.37	267.66	2.06	0.35	2.2	419	1
STCK934	POINT	318684.50	4431579.29	267.64	2.06	0.35	2.2	419	1
STCK935	POINT	318685.59	4431579.18	267.63	2.06	0.35	2.2	419	1
STCK936	POINT	318686.69	4431579.04	267.62	2.06	0.35	2.2	419	1
STCK937	POINT	318681.20	4431579.61	267.68	2.06	0.35	2.2	419	1
STCK938	POINT	318682.34	4431579.46	267.67	2.06	0.35	2.2	419	1
STCK939	POINT	318696.86	4431577.83	267.51	2.06	0.35	2.2	419	1
STCK940	POINT	318698.01	4431577.74	267.49	2.06	0.35	2.2	419	1
STCK941	POINT	318699.11	4431577.63	267.48	2.06	0.35	2.2	419	1
STCK942	POINT	318700.21	4431577.50	267.47	2.06	0.35	2.2	419	1
STCK943	POINT	318694.72	4431578.07	267.53	2.06	0.35	2.2	419	1
STCK944	POINT	318695.86	4431577.91	267.52	2.06	0.35	2.2	419	1
STCK945	POINT	318684.60	4431591.09	267.69	2.06	0.35	2.2	419	1
STCK946	POINT	318685.76	4431591.00	267.68	2.06	0.35	2.2	419	1
STCK947	POINT	318686.85	4431590.89	267.67	2.06	0.35	2.2	419	1
STCK948	POINT	318687.96	4431590.76	267.66	2.06	0.35	2.2	419	1
STCK949	POINT	318682.47	4431591.32	267.72	2.06	0.35	2.2	419	1
STCK950	POINT	318683.61	4431591.17	267.70	2.06	0.35	2.2	419	1
STCK951	POINT	318698.16	4431589.74	267.55	2.06	0.35	2.2	419	1
STCK952	POINT	318699.32	4431589.66	267.53	2.06	0.35	2.2	419	1
STCK953	POINT	318700.41	4431589.55	267.52	2.06	0.35	2.2	419	1
STCK954	POINT	318701.51	4431589.41	267.50	2.06	0.35	2.2	419	1
STCK955	POINT	318696.02	4431589.98	267.58	2.06	0.35	2.2	419	1
STCK956	POINT	318697.16	4431589.83	267.56	2.06	0.35	2.2	419	1
STCK957	POINT	318698.71	4431594.55	267.55	2.06	0.35	2.2	419	1
STCK958	POINT	318699.87	4431594.46	267.54	2.06	0.35	2.2	419	1
STCK959	POINT	318700.97	4431594.35	267.52	2.06	0.35	2.2	419	1
STCK960	POINT	318702.07	4431594.22	267.51	2.06	0.35	2.2	419	1
STCK961	POINT	318696.58	4431594.79	267.58	2.06	0.35	2.2	419	1
STCK962	POINT	318697.72	4431594.63	267.56	2.06	0.35	2.2	419	1
STCK963	POINT	318699.29	4431599.48	267.55	2.06	0.35	2.2	419	1
STCK964	POINT	318700.45	4431599.39	267.54	2.06	0.35	2.2	419	1
STCK965	POINT	318701.54	4431599.28	267.53	2.06	0.35	2.2	419	1
STCK966	POINT	318702.64	4431599.15	267.52	2.06	0.35	2.2	419	1
STCK967	POINT	318697.15	4431599.72	267.57	2.06	0.35	2.2	419	1
STCK968	POINT	318698.29	4431599.56	267.56	2.06	0.35	2.2	419	1
STCK969	POINT	318685.75	4431601.04	267.64	2.06	0.35	2.2	419	1
STCK970	POINT	318686.91	4431600.96	267.62	2.06	0.35	2.2	419	1
STCK971	POINT	318688.00	4431600.85	267.62	2.06	0.35	2.2	419	1
STCK972	POINT	318689.10	4431600.71	267.61	2.06	0.35	2.2	419	1
STCK973	POINT	318683.61	4431601.28	267.68	2.06	0.35	2.2	419	1
STCK974	POINT	318684.75	4431601.12	267.66	2.06	0.35	2.2	419	1
STCK975	POINT	318687.29	4431615.58	267.58	2.06	0.35	2.2	419	1
STCK976	POINT	318688.44	4431615.50	267.58	2.06	0.35	2.2	419	1
STCK977	POINT	318689.54	4431615.39	267.57	2.06	0.35	2.2	419	1
STCK978	POINT	318690.64	4431615.25	267.56	2.06	0.35	2.2	419	1
STCK979	POINT	318685.15	4431615.82	267.63	2.06	0.35	2.2	419	1
STCK980	POINT	318686.29	4431615.67	267.60	2.06	0.35	2.2	419	1
STCK981	POINT	318700.87	4431614.08	267.51	2.06	0.35	2.2	419	1
STCK982	POINT	318702.02	4431614.00	267.50	2.06	0.35	2.2	419	1

STCK983	POINT	318703.12	4431613.89	267.50	2.06	0.35	2.2	419	1
STCK984	POINT	318704.22	4431613.75	267.51	2.06	0.35	2.2	419	1
STCK985	POINT	318698.73	4431614.32	267.51	2.06	0.35	2.2	419	1
STCK986	POINT	318699.87	4431614.17	267.51	2.06	0.35	2.2	419	1
STCK987	POINT	318700.35	4431609.16	267.51	2.06	0.35	2.2	419	1
STCK988	POINT	318701.51	4431609.08	267.51	2.06	0.35	2.2	419	1
STCK989	POINT	318702.60	4431608.97	267.51	2.06	0.35	2.2	419	1
STCK990	POINT	318703.71	4431608.83	267.51	2.06	0.35	2.2	419	1
STCK991	POINT	318698.22	4431609.40	267.52	2.06	0.35	2.2	419	1
STCK992	POINT	318699.36	4431609.25	267.52	2.06	0.35	2.2	419	1
STCK993	POINT	318686.24	4431605.91	267.62	2.06	0.35	2.2	419	1
STCK994	POINT	318687.40	4431605.82	267.60	2.06	0.35	2.2	419	1
STCK995	POINT	318688.50	4431605.71	267.60	2.06	0.35	2.2	419	1
STCK996	POINT	318689.60	4431605.58	267.59	2.06	0.35	2.2	419	1
STCK997	POINT	318684.11	4431606.14	267.66	2.06	0.35	2.2	419	1
STCK998	POINT	318685.25	4431605.99	267.64	2.06	0.35	2.2	419	1
STCK999	POINT	318699.61	4431604.41	267.53	2.06	0.35	2.2	419	1
STCK1000	POINT	318700.76	4431604.32	267.53	2.06	0.35	2.2	419	1
STCK1001	POINT	318701.86	4431604.21	267.52	2.06	0.35	2.2	419	1
STCK1002	POINT	318702.96	4431604.08	267.51	2.06	0.35	2.2	419	1
STCK1003	POINT	318697.47	4431604.64	267.55	2.06	0.35	2.2	419	1
STCK1004	POINT	318698.61	4431604.49	267.54	2.06	0.35	2.2	419	1
STCK1005	POINT	318688.57	4431627.43	267.56	2.06	0.35	2.2	419	1
STCK1006	POINT	318689.73	4431627.34	267.55	2.06	0.35	2.2	419	1
STCK1007	POINT	318690.83	4431627.23	267.54	2.06	0.35	2.2	419	1
STCK1008	POINT	318691.93	4431627.10	267.53	2.06	0.35	2.2	419	1
STCK1009	POINT	318686.44	4431627.66	267.59	2.06	0.35	2.2	419	1
STCK1010	POINT	318687.58	4431627.51	267.57	2.06	0.35	2.2	419	1
STCK1011	POINT	318702.06	4431625.85	267.51	2.06	0.35	2.2	419	1
STCK1012	POINT	318703.22	4431625.76	267.51	2.06	0.35	2.2	419	1
STCK1013	POINT	318704.32	4431625.66	267.53	2.06	0.35	2.2	419	1
STCK1014	POINT	318705.42	4431625.52	267.56	2.06	0.35	2.2	419	1
STCK1015	POINT	318699.93	4431626.09	267.51	2.06	0.35	2.2	419	1
STCK1016	POINT	318701.07	4431625.94	267.51	2.06	0.35	2.2	419	1
STCK1017	POINT	318702.71	4431630.78	267.52	2.06	0.35	2.2	419	1
STCK1018	POINT	318703.86	4431630.70	267.54	2.06	0.35	2.2	419	1
STCK1019	POINT	318704.96	4431630.59	267.56	2.06	0.35	2.2	419	1
STCK1020	POINT	318706.06	4431630.45	267.59	2.06	0.35	2.2	419	1
STCK1021	POINT	318700.57	4431631.02	267.52	2.06	0.35	2.2	419	1
STCK1022	POINT	318701.71	4431630.87	267.52	2.06	0.35	2.2	419	1
STCK1023	POINT	318689.72	4431637.20	267.55	2.06	0.35	2.2	419	1
STCK1024	POINT	318690.87	4431637.11	267.54	2.06	0.35	2.2	419	1
STCK1025	POINT	318691.97	4431637.00	267.54	2.06	0.35	2.2	419	1
STCK1026	POINT	318693.07	4431636.87	267.53	2.06	0.35	2.2	419	1
STCK1027	POINT	318687.58	4431637.44	267.57	2.06	0.35	2.2	419	1
STCK1028	POINT	318688.72	4431637.28	267.56	2.06	0.35	2.2	419	1
STCK1029	POINT	318703.08	4431635.62	267.53	2.06	0.35	2.2	419	1
STCK1030	POINT	318704.23	4431635.53	267.55	2.06	0.35	2.2	419	1
STCK1031	POINT	318705.33	4431635.42	267.59	2.06	0.35	2.2	419	1
STCK1032	POINT	318706.43	4431635.29	267.62	2.06	0.35	2.2	419	1
STCK1033	POINT	318700.94	4431635.86	267.52	2.06	0.35	2.2	419	1
STCK1034	POINT	318702.08	4431635.70	267.53	2.06	0.35	2.2	419	1
STCK1035	POINT	318703.65	4431640.58	267.54	2.06	0.35	2.2	419	1
STCK1036	POINT	318704.81	4431640.49	267.58	2.06	0.35	2.2	419	1
STCK1037	POINT	318705.90	4431640.38	267.61	2.06	0.35	2.2	419	1
STCK1038	POINT	318707.00	4431640.25	267.65	2.06	0.35	2.2	419	1
STCK1039	POINT	318701.51	4431640.81	267.53	2.06	0.35	2.2	419	1
STCK1040	POINT	318702.65	4431640.66	267.53	2.06	0.35	2.2	419	1

STCK1041	POINT	318690.24	4431642.14	267.56	2.06	0.35	2.2	419	1
STCK1042	POINT	318691.40	4431642.05	267.55	2.06	0.35	2.2	419	1
STCK1043	POINT	318692.49	4431641.94	267.54	2.06	0.35	2.2	419	1
STCK1044	POINT	318693.59	4431641.81	267.53	2.06	0.35	2.2	419	1
STCK1045	POINT	318688.10	4431642.38	267.57	2.06	0.35	2.2	419	1
STCK1046	POINT	318689.24	4431642.22	267.56	2.06	0.35	2.2	419	1
STCK1047	POINT	318690.64	4431646.75	267.56	2.06	0.35	2.2	419	1
STCK1048	POINT	318691.80	4431646.66	267.55	2.06	0.35	2.2	419	1
STCK1049	POINT	318692.89	4431646.55	267.54	2.06	0.35	2.2	419	1
STCK1050	POINT	318694.00	4431646.41	267.53	2.06	0.35	2.2	419	1
STCK1051	POINT	318688.51	4431646.98	267.57	2.06	0.35	2.2	419	1
STCK1052	POINT	318689.65	4431646.83	267.57	2.06	0.35	2.2	419	1
STCK1053	POINT	318691.28	4431651.63	267.56	2.06	0.35	2.2	419	1
STCK1054	POINT	318692.44	4431651.55	267.55	2.06	0.35	2.2	419	1
STCK1055	POINT	318693.53	4431651.44	267.54	2.06	0.35	2.2	419	1
STCK1056	POINT	318694.63	4431651.30	267.53	2.06	0.35	2.2	419	1
STCK1057	POINT	318689.14	4431651.87	267.57	2.06	0.35	2.2	419	1
STCK1058	POINT	318690.28	4431651.72	267.56	2.06	0.35	2.2	419	1
STCK1059	POINT	318704.78	4431650.07	267.53	2.06	0.35	2.2	419	1
STCK1060	POINT	318705.93	4431649.98	267.58	2.06	0.35	2.2	419	1
STCK1061	POINT	318707.03	4431649.87	267.63	2.06	0.35	2.2	419	1
STCK1062	POINT	318708.13	4431649.74	267.67	2.06	0.35	2.2	419	1
STCK1063	POINT	318702.64	4431650.31	267.50	2.06	0.35	2.2	419	1
STCK1064	POINT	318703.78	4431650.15	267.50	2.06	0.35	2.2	419	1
STCK1065	POINT	318692.59	4431662.85	267.52	2.06	0.35	2.2	419	1
STCK1066	POINT	318693.75	4431662.77	267.52	2.06	0.35	2.2	419	1
STCK1067	POINT	318694.85	4431662.66	267.51	2.06	0.35	2.2	419	1
STCK1068	POINT	318695.95	4431662.52	267.50	2.06	0.35	2.2	419	1
STCK1069	POINT	318690.46	4431663.09	267.54	2.06	0.35	2.2	419	1
STCK1070	POINT	318691.60	4431662.94	267.53	2.06	0.35	2.2	419	1
STCK1071	POINT	318705.99	4431661.34	267.63	2.06	0.35	2.2	419	1
STCK1072	POINT	318707.15	4431661.25	267.69	2.06	0.35	2.2	419	1
STCK1073	POINT	318708.25	4431661.14	267.74	2.06	0.35	2.2	419	1
STCK1074	POINT	318709.35	4431661.01	267.79	2.06	0.35	2.2	419	1
STCK1075	POINT	318703.86	4431661.58	267.55	2.06	0.35	2.2	419	1
STCK1076	POINT	318705.00	4431661.42	267.59	2.06	0.35	2.2	419	1
STCK1077	POINT	318706.51	4431666.22	267.69	2.06	0.35	2.2	419	1
STCK1078	POINT	318707.66	4431666.14	267.74	2.06	0.35	2.2	419	1
STCK1079	POINT	318708.76	4431666.03	267.79	2.06	0.35	2.2	419	1
STCK1080	POINT	318709.86	4431665.89	267.83	2.06	0.35	2.2	419	1
STCK1081	POINT	318704.37	4431666.46	267.61	2.06	0.35	2.2	419	1
STCK1082	POINT	318705.51	4431666.31	267.65	2.06	0.35	2.2	419	1
STCK1083	POINT	318693.45	4431672.41	267.49	2.06	0.35	2.2	419	1
STCK1084	POINT	318694.61	4431672.33	267.49	2.06	0.35	2.2	419	1
STCK1085	POINT	318695.71	4431672.22	267.48	2.06	0.35	2.2	419	1
STCK1086	POINT	318696.81	4431672.08	267.49	2.06	0.35	2.2	419	1
STCK1087	POINT	318691.32	4431672.65	267.49	2.06	0.35	2.2	419	1
STCK1088	POINT	318692.46	4431672.50	267.49	2.06	0.35	2.2	419	1
STCK1089	POINT	318707.02	4431670.89	267.75	2.06	0.35	2.2	419	1
STCK1090	POINT	318708.17	4431670.80	267.79	2.06	0.35	2.2	419	1
STCK1091	POINT	318709.27	4431670.69	267.83	2.06	0.35	2.2	419	1
STCK1092	POINT	318710.37	4431670.56	267.87	2.06	0.35	2.2	419	1
STCK1093	POINT	318704.88	4431671.12	267.67	2.06	0.35	2.2	419	1
STCK1094	POINT	318706.02	4431670.97	267.71	2.06	0.35	2.2	419	1
STCK1095	POINT	318707.61	4431675.35	267.78	2.06	0.35	2.2	419	1
STCK1096	POINT	318708.77	4431675.27	267.82	2.06	0.35	2.2	419	1
STCK1097	POINT	318709.87	4431675.16	267.85	2.06	0.35	2.2	419	1
STCK1098	POINT	318710.97	4431675.02	267.89	2.06	0.35	2.2	419	1

STCK1099	POINT	318705.48	4431675.59	267.72	2.06	0.35	2.2	419	1
STCK1100	POINT	318706.62	4431675.44	267.75	2.06	0.35	2.2	419	1
STCK1101	POINT	318694.07	4431676.88	267.47	2.06	0.35	2.2	419	1
STCK1102	POINT	318695.22	4431676.80	267.47	2.06	0.35	2.2	419	1
STCK1103	POINT	318696.32	4431676.69	267.47	2.06	0.35	2.2	419	1
STCK1104	POINT	318697.42	4431676.55	267.49	2.06	0.35	2.2	419	1
STCK1105	POINT	318691.93	4431677.12	267.47	2.06	0.35	2.2	419	1
STCK1106	POINT	318693.07	4431676.97	267.47	2.06	0.35	2.2	419	1
STCK1107	POINT	318708.04	4431680.26	267.81	2.06	0.35	2.2	419	1
STCK1108	POINT	318709.19	4431680.18	267.84	2.06	0.35	2.2	419	1
STCK1109	POINT	318710.29	4431680.07	267.87	2.06	0.35	2.2	419	1
STCK1110	POINT	318711.39	4431679.93	267.90	2.06	0.35	2.2	419	1
STCK1111	POINT	318705.90	4431680.50	267.75	2.06	0.35	2.2	419	1
STCK1112	POINT	318707.04	4431680.35	267.78	2.06	0.35	2.2	419	1
STCK1113	POINT	318708.54	4431684.80	267.83	2.06	0.35	2.2	419	1
STCK1114	POINT	318709.70	4431684.71	267.85	2.06	0.35	2.2	419	1
STCK1115	POINT	318710.79	4431684.60	267.88	2.06	0.35	2.2	419	1
STCK1116	POINT	318711.89	4431684.47	267.90	2.06	0.35	2.2	419	1
STCK1117	POINT	318706.40	4431685.04	267.78	2.06	0.35	2.2	419	1
STCK1118	POINT	318707.54	4431684.88	267.80	2.06	0.35	2.2	419	1
STCK1119	POINT	318694.95	4431686.32	267.44	2.06	0.35	2.2	419	1
STCK1120	POINT	318696.11	4431686.23	267.44	2.06	0.35	2.2	419	1
STCK1121	POINT	318697.21	4431686.12	267.46	2.06	0.35	2.2	419	1
STCK1122	POINT	318698.31	4431685.99	267.50	2.06	0.35	2.2	419	1
STCK1123	POINT	318692.82	4431686.56	267.44	2.06	0.35	2.2	419	1
STCK1124	POINT	318693.96	4431686.40	267.44	2.06	0.35	2.2	419	1
STCK1125	POINT	318696.09	4431694.72	267.43	2.06	0.35	2.2	419	1
STCK1126	POINT	318697.25	4431694.63	267.44	2.06	0.35	2.2	419	1
STCK1127	POINT	318698.34	4431694.52	267.49	2.06	0.35	2.2	419	1
STCK1128	POINT	318699.45	4431694.39	267.54	2.06	0.35	2.2	419	1
STCK1129	POINT	318693.95	4431694.96	267.43	2.06	0.35	2.2	419	1
STCK1130	POINT	318695.10	4431694.80	267.43	2.06	0.35	2.2	419	1
STCK1131	POINT	318709.59	4431693.04	267.85	2.06	0.35	2.2	419	1
STCK1132	POINT	318710.74	4431692.96	267.87	2.06	0.35	2.2	419	1
STCK1133	POINT	318711.84	4431692.85	267.88	2.06	0.35	2.2	419	1
STCK1134	POINT	318712.94	4431692.71	267.89	2.06	0.35	2.2	419	1
STCK1135	POINT	318707.45	4431693.28	267.82	2.06	0.35	2.2	419	1
STCK1136	POINT	318708.59	4431693.13	267.83	2.06	0.35	2.2	419	1
STCK1137	POINT	318710.08	4431698.00	267.85	2.06	0.35	2.2	419	1
STCK1138	POINT	318711.23	4431697.91	267.86	2.06	0.35	2.2	419	1
STCK1139	POINT	318712.33	4431697.80	267.87	2.06	0.35	2.2	419	1
STCK1140	POINT	318713.43	4431697.67	267.86	2.06	0.35	2.2	419	1
STCK1141	POINT	318707.94	4431698.24	267.84	2.06	0.35	2.2	419	1
STCK1142	POINT	318709.08	4431698.08	267.84	2.06	0.35	2.2	419	1
STCK1143	POINT	318710.55	4431702.90	267.85	2.06	0.35	2.2	419	1
STCK1144	POINT	318711.71	4431702.81	267.85	2.06	0.35	2.2	419	1
STCK1145	POINT	318712.81	4431702.71	267.85	2.06	0.35	2.2	419	1
STCK1146	POINT	318713.91	4431702.57	267.82	2.06	0.35	2.2	419	1
STCK1147	POINT	318708.42	4431703.14	267.85	2.06	0.35	2.2	419	1
STCK1148	POINT	318709.56	4431702.98	267.85	2.06	0.35	2.2	419	1
STCK1149	POINT	318697.09	4431704.42	267.44	2.06	0.35	2.2	419	1
STCK1150	POINT	318698.25	4431704.34	267.49	2.06	0.35	2.2	419	1
STCK1151	POINT	318699.35	4431704.23	267.55	2.06	0.35	2.2	419	1
STCK1152	POINT	318700.45	4431704.09	267.61	2.06	0.35	2.2	419	1
STCK1153	POINT	318694.96	4431704.66	267.44	2.06	0.35	2.2	419	1
STCK1154	POINT	318696.10	4431704.51	267.44	2.06	0.35	2.2	419	1
STCK1155	POINT	318713.92	4431566.14	267.36	2.06	0.35	2.2	419	1
STCK1156	POINT	318715.08	4431566.06	267.36	2.06	0.35	2.2	419	1

STCK1157	POINT	318716.17	4431565.95	267.36	2.06	0.35	2.2	419	1
STCK1158	POINT	318717.28	4431565.81	267.36	2.06	0.35	2.2	419	1
STCK1159	POINT	318711.78	4431566.38	267.36	2.06	0.35	2.2	419	1
STCK1160	POINT	318712.93	4431566.22	267.36	2.06	0.35	2.2	419	1
STCK1161	POINT	318727.35	4431564.61	267.33	2.06	0.35	2.2	419	1
STCK1162	POINT	318728.51	4431564.53	267.30	2.06	0.35	2.2	419	1
STCK1163	POINT	318729.60	4431564.42	267.27	2.06	0.35	2.2	419	1
STCK1164	POINT	318730.71	4431564.28	267.23	2.06	0.35	2.2	419	1
STCK1165	POINT	318725.21	4431564.85	267.38	2.06	0.35	2.2	419	1
STCK1166	POINT	318726.36	4431564.70	267.36	2.06	0.35	2.2	419	1
STCK1167	POINT	318727.88	4431569.36	267.38	2.06	0.35	2.2	419	1
STCK1168	POINT	318729.03	4431569.27	267.35	2.06	0.35	2.2	419	1
STCK1169	POINT	318730.13	4431569.16	267.32	2.06	0.35	2.2	419	1
STCK1170	POINT	318731.23	4431569.03	267.29	2.06	0.35	2.2	419	1
STCK1171	POINT	318725.74	4431569.60	267.44	2.06	0.35	2.2	419	1
STCK1172	POINT	318726.88	4431569.44	267.41	2.06	0.35	2.2	419	1
STCK1173	POINT	318728.52	4431574.26	267.44	2.06	0.35	2.2	419	1
STCK1174	POINT	318729.67	4431574.17	267.41	2.06	0.35	2.2	419	1
STCK1175	POINT	318730.77	4431574.06	267.38	2.06	0.35	2.2	419	1
STCK1176	POINT	318731.87	4431573.93	267.35	2.06	0.35	2.2	419	1
STCK1177	POINT	318726.38	4431574.50	267.49	2.06	0.35	2.2	419	1
STCK1178	POINT	318727.52	4431574.34	267.46	2.06	0.35	2.2	419	1
STCK1179	POINT	318715.00	4431575.77	267.44	2.06	0.35	2.2	419	1
STCK1180	POINT	318716.15	4431575.68	267.46	2.06	0.35	2.2	419	1
STCK1181	POINT	318717.25	4431575.58	267.47	2.06	0.35	2.2	419	1
STCK1182	POINT	318718.35	4431575.44	267.48	2.06	0.35	2.2	419	1
STCK1183	POINT	318712.86	4431576.01	267.41	2.06	0.35	2.2	419	1
STCK1184	POINT	318714.00	4431575.85	267.43	2.06	0.35	2.2	419	1
STCK1185	POINT	318716.25	4431587.60	267.60	2.06	0.35	2.2	419	1
STCK1186	POINT	318717.41	4431587.52	267.63	2.06	0.35	2.2	419	1
STCK1187	POINT	318718.51	4431587.41	267.65	2.06	0.35	2.2	419	1
STCK1188	POINT	318719.61	4431587.27	267.65	2.06	0.35	2.2	419	1
STCK1189	POINT	318714.12	4431587.84	267.54	2.06	0.35	2.2	419	1
STCK1190	POINT	318715.26	4431587.68	267.57	2.06	0.35	2.2	419	1
STCK1191	POINT	318729.69	4431586.08	267.58	2.06	0.35	2.2	419	1
STCK1192	POINT	318730.85	4431586.00	267.55	2.06	0.35	2.2	419	1
STCK1193	POINT	318731.94	4431585.89	267.52	2.06	0.35	2.2	419	1
STCK1194	POINT	318733.04	4431585.75	267.49	2.06	0.35	2.2	419	1
STCK1195	POINT	318727.55	4431586.32	267.63	2.06	0.35	2.2	419	1
STCK1196	POINT	318728.70	4431586.17	267.60	2.06	0.35	2.2	419	1
STCK1197	POINT	318730.33	4431590.99	267.60	2.06	0.35	2.2	419	1
STCK1198	POINT	318731.49	4431590.90	267.57	2.06	0.35	2.2	419	1
STCK1199	POINT	318732.59	4431590.79	267.54	2.06	0.35	2.2	419	1
STCK1200	POINT	318733.69	4431590.66	267.51	2.06	0.35	2.2	419	1
STCK1201	POINT	318728.20	4431591.22	267.65	2.06	0.35	2.2	419	1
STCK1202	POINT	318729.34	4431591.07	267.62	2.06	0.35	2.2	419	1
STCK1203	POINT	318717.24	4431597.49	267.72	2.06	0.35	2.2	419	1
STCK1204	POINT	318718.40	4431597.41	267.76	2.06	0.35	2.2	419	1
STCK1205	POINT	318719.50	4431597.30	267.75	2.06	0.35	2.2	419	1
STCK1206	POINT	318720.60	4431597.16	267.75	2.06	0.35	2.2	419	1
STCK1207	POINT	318715.11	4431597.73	267.65	2.06	0.35	2.2	419	1
STCK1208	POINT	318716.25	4431597.58	267.69	2.06	0.35	2.2	419	1
STCK1209	POINT	318730.88	4431595.99	267.60	2.06	0.35	2.2	419	1
STCK1210	POINT	318732.04	4431595.90	267.57	2.06	0.35	2.2	419	1
STCK1211	POINT	318733.13	4431595.79	267.54	2.06	0.35	2.2	419	1
STCK1212	POINT	318734.23	4431595.65	267.51	2.06	0.35	2.2	419	1
STCK1213	POINT	318728.74	4431596.22	267.65	2.06	0.35	2.2	419	1
STCK1214	POINT	318729.88	4431596.07	267.62	2.06	0.35	2.2	419	1

STCK1215	POINT	318731.45	4431600.78	267.58	2.06	0.35	2.2	419	1
STCK1216	POINT	318732.61	4431600.69	267.55	2.06	0.35	2.2	419	1
STCK1217	POINT	318733.70	4431600.58	267.53	2.06	0.35	2.2	419	1
STCK1218	POINT	318734.80	4431600.45	267.51	2.06	0.35	2.2	419	1
STCK1219	POINT	318729.31	4431601.02	267.63	2.06	0.35	2.2	419	1
STCK1220	POINT	318730.46	4431600.86	267.60	2.06	0.35	2.2	419	1
STCK1221	POINT	318717.79	4431602.31	267.76	2.06	0.35	2.2	419	1
STCK1222	POINT	318718.95	4431602.23	267.78	2.06	0.35	2.2	419	1
STCK1223	POINT	318720.04	4431602.12	267.77	2.06	0.35	2.2	419	1
STCK1224	POINT	318721.14	4431601.98	267.76	2.06	0.35	2.2	419	1
STCK1225	POINT	318715.65	4431602.55	267.69	2.06	0.35	2.2	419	1
STCK1226	POINT	318716.79	4431602.40	267.73	2.06	0.35	2.2	419	1
STCK1227	POINT	318732.02	4431605.64	267.55	2.06	0.35	2.2	419	1
STCK1228	POINT	318733.18	4431605.56	267.52	2.06	0.35	2.2	419	1
STCK1229	POINT	318734.27	4431605.45	267.50	2.06	0.35	2.2	419	1
STCK1230	POINT	318735.38	4431605.31	267.49	2.06	0.35	2.2	419	1
STCK1231	POINT	318729.88	4431605.88	267.59	2.06	0.35	2.2	419	1
STCK1232	POINT	318731.03	4431605.73	267.57	2.06	0.35	2.2	419	1
STCK1233	POINT	318732.45	4431610.65	267.52	2.06	0.35	2.2	419	1
STCK1234	POINT	318733.60	4431610.56	267.49	2.06	0.35	2.2	419	1
STCK1235	POINT	318734.70	4431610.46	267.48	2.06	0.35	2.2	419	1
STCK1236	POINT	318735.80	4431610.32	267.48	2.06	0.35	2.2	419	1
STCK1237	POINT	318730.31	4431610.89	267.56	2.06	0.35	2.2	419	1
STCK1238	POINT	318731.45	4431610.74	267.54	2.06	0.35	2.2	419	1
STCK1239	POINT	318718.96	4431612.12	267.81	2.06	0.35	2.2	419	1
STCK1240	POINT	318720.11	4431612.03	267.78	2.06	0.35	2.2	419	1
STCK1241	POINT	318721.21	4431611.92	267.76	2.06	0.35	2.2	419	1
STCK1242	POINT	318722.31	4431611.79	267.73	2.06	0.35	2.2	419	1
STCK1243	POINT	318716.82	4431612.36	267.75	2.06	0.35	2.2	419	1
STCK1244	POINT	318717.96	4431612.20	267.79	2.06	0.35	2.2	419	1
STCK1245	POINT	318720.30	4431623.96	267.76	2.06	0.35	2.2	419	1
STCK1246	POINT	318721.46	4431623.87	267.72	2.06	0.35	2.2	419	1
STCK1247	POINT	318722.55	4431623.76	267.69	2.06	0.35	2.2	419	1
STCK1248	POINT	318723.66	4431623.63	267.65	2.06	0.35	2.2	419	1
STCK1249	POINT	318718.16	4431624.19	267.78	2.06	0.35	2.2	419	1
STCK1250	POINT	318719.31	4431624.04	267.79	2.06	0.35	2.2	419	1
STCK1251	POINT	318733.79	4431622.41	267.45	2.06	0.35	2.2	419	1
STCK1252	POINT	318734.94	4431622.32	267.43	2.06	0.35	2.2	419	1
STCK1253	POINT	318736.04	4431622.21	267.43	2.06	0.35	2.2	419	1
STCK1254	POINT	318737.14	4431622.08	267.43	2.06	0.35	2.2	419	1
STCK1255	POINT	318731.65	4431622.65	267.48	2.06	0.35	2.2	419	1
STCK1256	POINT	318732.79	4431622.49	267.46	2.06	0.35	2.2	419	1
STCK1257	POINT	318721.26	4431633.84	267.69	2.06	0.35	2.2	419	1
STCK1258	POINT	318722.42	4431633.75	267.65	2.06	0.35	2.2	419	1
STCK1259	POINT	318723.51	4431633.64	267.61	2.06	0.35	2.2	419	1
STCK1260	POINT	318724.61	4431633.51	267.57	2.06	0.35	2.2	419	1
STCK1261	POINT	318719.12	4431634.08	267.75	2.06	0.35	2.2	419	1
STCK1262	POINT	318720.26	4431633.92	267.72	2.06	0.35	2.2	419	1
STCK1263	POINT	318734.83	4431632.25	267.40	2.06	0.35	2.2	419	1
STCK1264	POINT	318735.99	4431632.16	267.39	2.06	0.35	2.2	419	1
STCK1265	POINT	318737.09	4431632.05	267.39	2.06	0.35	2.2	419	1
STCK1266	POINT	318738.19	4431631.92	267.39	2.06	0.35	2.2	419	1
STCK1267	POINT	318732.70	4431632.48	267.42	2.06	0.35	2.2	419	1
STCK1268	POINT	318733.84	4431632.33	267.41	2.06	0.35	2.2	419	1
STCK1269	POINT	318734.29	4431627.33	267.42	2.06	0.35	2.2	419	1
STCK1270	POINT	318735.44	4431627.24	267.41	2.06	0.35	2.2	419	1
STCK1271	POINT	318736.54	4431627.13	267.41	2.06	0.35	2.2	419	1
STCK1272	POINT	318737.64	4431627.00	267.41	2.06	0.35	2.2	419	1

STCK1273	POINT	318732.15	4431627.56	267.45	2.06	0.35	2.2	419	1
STCK1274	POINT	318733.29	4431627.41	267.43	2.06	0.35	2.2	419	1
STCK1275	POINT	318735.24	4431637.07	267.38	2.06	0.35	2.2	419	1
STCK1276	POINT	318736.40	4431636.99	267.38	2.06	0.35	2.2	419	1
STCK1277	POINT	318737.50	4431636.88	267.38	2.06	0.35	2.2	419	1
STCK1278	POINT	318738.60	4431636.74	267.37	2.06	0.35	2.2	419	1
STCK1279	POINT	318733.10	4431637.31	267.40	2.06	0.35	2.2	419	1
STCK1280	POINT	318734.25	4431637.16	267.39	2.06	0.35	2.2	419	1
STCK1281	POINT	318721.90	4431638.53	267.65	2.06	0.35	2.2	419	1
STCK1282	POINT	318723.05	4431638.45	267.60	2.06	0.35	2.2	419	1
STCK1283	POINT	318724.15	4431638.34	267.56	2.06	0.35	2.2	419	1
STCK1284	POINT	318725.25	4431638.20	267.52	2.06	0.35	2.2	419	1
STCK1285	POINT	318719.76	4431638.77	267.73	2.06	0.35	2.2	419	1
STCK1286	POINT	318720.90	4431638.61	267.68	2.06	0.35	2.2	419	1
STCK1287	POINT	318722.49	4431643.09	267.61	2.06	0.35	2.2	419	1
STCK1288	POINT	318723.64	4431643.00	267.57	2.06	0.35	2.2	419	1
STCK1289	POINT	318724.74	4431642.89	267.53	2.06	0.35	2.2	419	1
STCK1290	POINT	318725.84	4431642.76	267.49	2.06	0.35	2.2	419	1
STCK1291	POINT	318720.35	4431643.32	267.69	2.06	0.35	2.2	419	1
STCK1292	POINT	318721.49	4431643.17	267.65	2.06	0.35	2.2	419	1
STCK1293	POINT	318722.81	4431648.02	267.59	2.06	0.35	2.2	419	1
STCK1294	POINT	318723.96	4431647.93	267.55	2.06	0.35	2.2	419	1
STCK1295	POINT	318725.06	4431647.82	267.51	2.06	0.35	2.2	419	1
STCK1296	POINT	318726.16	4431647.68	267.48	2.06	0.35	2.2	419	1
STCK1297	POINT	318720.67	4431648.25	267.66	2.06	0.35	2.2	419	1
STCK1298	POINT	318721.81	4431648.10	267.62	2.06	0.35	2.2	419	1
STCK1299	POINT	318736.36	4431646.47	267.40	2.06	0.35	2.2	419	1
STCK1300	POINT	318737.51	4431646.38	267.39	2.06	0.35	2.2	419	1
STCK1301	POINT	318738.61	4431646.27	267.38	2.06	0.35	2.2	419	1
STCK1302	POINT	318739.71	4431646.14	267.38	2.06	0.35	2.2	419	1
STCK1303	POINT	318734.22	4431646.71	267.41	2.06	0.35	2.2	419	1
STCK1304	POINT	318735.36	4431646.55	267.40	2.06	0.35	2.2	419	1
STCK1305	POINT	318724.08	4431659.29	267.58	2.06	0.35	2.2	419	1
STCK1306	POINT	318725.24	4431659.21	267.55	2.06	0.35	2.2	419	1
STCK1307	POINT	318726.33	4431659.10	267.52	2.06	0.35	2.2	419	1
STCK1308	POINT	318727.44	4431658.96	267.49	2.06	0.35	2.2	419	1
STCK1309	POINT	318721.95	4431659.53	267.65	2.06	0.35	2.2	419	1
STCK1310	POINT	318723.09	4431659.38	267.61	2.06	0.35	2.2	419	1
STCK1311	POINT	318725.19	4431668.76	267.60	2.06	0.35	2.2	419	1
STCK1312	POINT	318726.34	4431668.67	267.57	2.06	0.35	2.2	419	1
STCK1313	POINT	318727.44	4431668.56	267.54	2.06	0.35	2.2	419	1
STCK1314	POINT	318728.54	4431668.43	267.53	2.06	0.35	2.2	419	1
STCK1315	POINT	318723.05	4431669.00	267.64	2.06	0.35	2.2	419	1
STCK1316	POINT	318724.19	4431668.84	267.62	2.06	0.35	2.2	419	1
STCK1317	POINT	318737.51	4431657.64	267.47	2.06	0.35	2.2	419	1
STCK1318	POINT	318738.67	4431657.56	267.46	2.06	0.35	2.2	419	1
STCK1319	POINT	318739.76	4431657.45	267.46	2.06	0.35	2.2	419	1
STCK1320	POINT	318740.87	4431657.31	267.45	2.06	0.35	2.2	419	1
STCK1321	POINT	318735.38	4431657.88	267.48	2.06	0.35	2.2	419	1
STCK1322	POINT	318736.52	4431657.73	267.48	2.06	0.35	2.2	419	1
STCK1323	POINT	318738.06	4431662.66	267.50	2.06	0.35	2.2	419	1
STCK1324	POINT	318739.22	4431662.58	267.49	2.06	0.35	2.2	419	1
STCK1325	POINT	318740.31	4431662.47	267.49	2.06	0.35	2.2	419	1
STCK1326	POINT	318741.41	4431662.33	267.48	2.06	0.35	2.2	419	1
STCK1327	POINT	318735.92	4431662.90	267.52	2.06	0.35	2.2	419	1
STCK1328	POINT	318737.06	4431662.75	267.51	2.06	0.35	2.2	419	1
STCK1329	POINT	318738.73	4431667.18	267.52	2.06	0.35	2.2	419	1
STCK1330	POINT	318739.88	4431667.09	267.51	2.06	0.35	2.2	419	1

STCK1331	POINT	318740.98	4431666.99	267.50	2.06	0.35	2.2	419	1
STCK1332	POINT	318742.08	4431666.85	267.49	2.06	0.35	2.2	419	1
STCK1333	POINT	318736.59	4431667.42	267.54	2.06	0.35	2.2	419	1
STCK1334	POINT	318737.73	4431667.26	267.53	2.06	0.35	2.2	419	1
STCK1335	POINT	318739.11	4431671.68	267.53	2.06	0.35	2.2	419	1
STCK1336	POINT	318740.26	4431671.59	267.52	2.06	0.35	2.2	419	1
STCK1337	POINT	318741.36	4431671.48	267.51	2.06	0.35	2.2	419	1
STCK1338	POINT	318742.46	4431671.35	267.50	2.06	0.35	2.2	419	1
STCK1339	POINT	318736.97	4431671.92	267.55	2.06	0.35	2.2	419	1
STCK1340	POINT	318738.11	4431671.76	267.54	2.06	0.35	2.2	419	1
STCK1341	POINT	318725.64	4431673.16	267.59	2.06	0.35	2.2	419	1
STCK1342	POINT	318726.79	4431673.07	267.57	2.06	0.35	2.2	419	1
STCK1343	POINT	318727.89	4431672.96	267.55	2.06	0.35	2.2	419	1
STCK1344	POINT	318728.99	4431672.83	267.55	2.06	0.35	2.2	419	1
STCK1345	POINT	318723.50	4431673.40	267.63	2.06	0.35	2.2	419	1
STCK1346	POINT	318724.64	4431673.24	267.61	2.06	0.35	2.2	419	1
STCK1347	POINT	318739.79	4431676.56	267.52	2.06	0.35	2.2	419	1
STCK1348	POINT	318740.95	4431676.48	267.50	2.06	0.35	2.2	419	1
STCK1349	POINT	318742.04	4431676.36	267.49	2.06	0.35	2.2	419	1
STCK1350	POINT	318743.14	4431676.23	267.48	2.06	0.35	2.2	419	1
STCK1351	POINT	318737.65	4431676.80	267.54	2.06	0.35	2.2	419	1
STCK1352	POINT	318738.80	4431676.64	267.53	2.06	0.35	2.2	419	1
STCK1353	POINT	318740.18	4431681.13	267.51	2.06	0.35	2.2	419	1
STCK1354	POINT	318741.33	4431681.04	267.49	2.06	0.35	2.2	419	1
STCK1355	POINT	318742.43	4431680.94	267.48	2.06	0.35	2.2	419	1
STCK1356	POINT	318743.53	4431680.80	267.47	2.06	0.35	2.2	419	1
STCK1357	POINT	318738.04	4431681.37	267.53	2.06	0.35	2.2	419	1
STCK1358	POINT	318739.18	4431681.21	267.52	2.06	0.35	2.2	419	1
STCK1359	POINT	318726.66	4431682.68	267.57	2.06	0.35	2.2	419	1
STCK1360	POINT	318727.82	4431682.59	267.56	2.06	0.35	2.2	419	1
STCK1361	POINT	318728.91	4431682.49	267.55	2.06	0.35	2.2	419	1
STCK1362	POINT	318730.02	4431682.35	267.55	2.06	0.35	2.2	419	1
STCK1363	POINT	318724.52	4431682.92	267.60	2.06	0.35	2.2	419	1
STCK1364	POINT	318725.66	4431682.76	267.58	2.06	0.35	2.2	419	1
STCK1365	POINT	318728.59	4431700.86	267.58	2.06	0.35	2.2	419	1
STCK1366	POINT	318729.74	4431700.78	267.58	2.06	0.35	2.2	419	1
STCK1367	POINT	318730.84	4431700.67	267.58	2.06	0.35	2.2	419	1
STCK1368	POINT	318731.94	4431700.53	267.58	2.06	0.35	2.2	419	1
STCK1369	POINT	318726.45	4431701.10	267.58	2.06	0.35	2.2	419	1
STCK1370	POINT	318727.59	4431700.95	267.58	2.06	0.35	2.2	419	1
STCK1371	POINT	318742.20	4431699.24	267.56	2.06	0.35	2.2	419	1
STCK1372	POINT	318743.35	4431699.16	267.55	2.06	0.35	2.2	419	1
STCK1373	POINT	318744.45	4431699.05	267.54	2.06	0.35	2.2	419	1
STCK1374	POINT	318745.55	4431698.91	267.54	2.06	0.35	2.2	419	1
STCK1375	POINT	318740.06	4431699.48	267.57	2.06	0.35	2.2	419	1
STCK1376	POINT	318741.20	4431699.33	267.56	2.06	0.35	2.2	419	1
STCK1377	POINT	318741.70	4431694.37	267.52	2.06	0.35	2.2	419	1
STCK1378	POINT	318742.86	4431694.29	267.52	2.06	0.35	2.2	419	1
STCK1379	POINT	318743.95	4431694.17	267.51	2.06	0.35	2.2	419	1
STCK1380	POINT	318745.06	4431694.04	267.50	2.06	0.35	2.2	419	1
STCK1381	POINT	318739.57	4431694.61	267.54	2.06	0.35	2.2	419	1
STCK1382	POINT	318740.71	4431694.45	267.53	2.06	0.35	2.2	419	1
STCK1383	POINT	318741.08	4431689.40	267.50	2.06	0.35	2.2	419	1
STCK1384	POINT	318742.23	4431689.31	267.49	2.06	0.35	2.2	419	1
STCK1385	POINT	318743.33	4431689.20	267.48	2.06	0.35	2.2	419	1
STCK1386	POINT	318744.43	4431689.07	267.47	2.06	0.35	2.2	419	1
STCK1387	POINT	318738.94	4431689.64	267.52	2.06	0.35	2.2	419	1
STCK1388	POINT	318740.08	4431689.48	267.51	2.06	0.35	2.2	419	1

STCK1389	POINT	318727.68	4431691.08	267.56	2.06	0.35	2.2	419	1
STCK1390	POINT	318728.83	4431690.99	267.55	2.06	0.35	2.2	419	1
STCK1391	POINT	318729.93	4431690.88	267.55	2.06	0.35	2.2	419	1
STCK1392	POINT	318731.03	4431690.75	267.55	2.06	0.35	2.2	419	1
STCK1393	POINT	318725.54	4431691.32	267.58	2.06	0.35	2.2	419	1
STCK1394	POINT	318726.68	4431691.16	267.57	2.06	0.35	2.2	419	1

ATTACHMENT 2

Resume for Steven Branoff

STEVEN B BRANOFF

Principal

Steve Branoff has 25 years of experience in the field of air quality, with special emphasis on air permitting, air compliance and human health risk assessments. He specializes in work related to air quality permitting and compliance at the local, state and federal levels. He frequently manages projects involving emissions estimation, dispersion modeling analysis, control technology feasibility and cost, as well as GIS-based methods of displaying and interpreting data. This includes work with criteria pollutants, air toxics and greenhouse gases (GHGs) for a variety of source categories, including Fortune 500 companies with facilities located throughout the US. Steve has extensive experience in regulatory interpretation and negotiations, including litigation. He is certified by SJVAPCD as a Certified Air Permit Professional (CAPP) and by CARB as a Low Carbon Fuel Standard (LCFS) and GHG Emissions Verifier. Prior to joining Ramboll, Steve worked for five years in the Air Permits Office at USEPA Region 9.



EDUCATION

1995-1997

MS, Environmental Engineering

University of California at Berkeley, Berkeley, CA

1986-1990

BA, English

Williams College, Williamstown, MA

COURSES/CERTIFICATIONS

Accredited Verifier for Low Carbon Fuel Standard and Greenhouse Gas Reporting programs by California Air Resources Board

Certified Air Permit Professional by San Joaquin Valley Air Pollution Control District

PROJECT EXPERIENCE

Prepared a health risk assessment under California AB 2588 for an SF Bay Area project involving conversion of an existing oil refinery to a renewable diesel production facility. This work included an evaluation of new and modified sources. Work included an evaluation of risk in an area designated as an Overburdened Community, under California’s AB 617 community risk program.

Performed a health risk assessment under California AB 2588 for a cement manufacturing plant located in California. This included assessment of facility-wide air toxics emissions and associated risks assessed using air dispersion modeling and California risk methodologies.

CONTACT INFORMATION

Steven B. Branoff

sbranoff@ramboll.com

+1 (415) 796-1942

Ramboll
201 California Street
Suite 1200
San Francisco, 94111
United States of America

Assisted in obtaining environmental approvals for a new data center in the San Francisco Bay Area. Work included obtaining an air permit, requiring an evaluation of BACT and a Health Risk Assessment. This work also included assistance in obtaining approval of backup generators from the California Energy Commission, including CEQA review plus additional CEC requirements.

Served as expert witness during appeal of an air permit issued by Bay Area AQMD for a landfill gas-to-energy project; successfully obtained remand and reissuance of permit. For the same client, assisted in NSR permitting, preparation of an AB 2588 health risk assessment, and prepared EIR for CEQA approval.

Served as expert witness during class action litigation regarding exposure to hydrogen sulfide released from a geothermal power plant during an emergency event.

Provided technical support during negotiations with EPA and DOJ on behalf of an international aluminum manufacturer regarding alleged violations of NSR, Title V, NSPS, and MACT requirements. This work included a detailed review of background documents and guidance regarding various regulatory issues raised during the process.

Provided technical support during negotiations with EPA on behalf of an ammonia processing facility regarding compliance with Risk Management Program (RMP) regulations. This work included coordination of multiple other consulting firms to achieve compliance schedule deadlines.

Assisted in multi-year State enforcement negotiations and air permitting for an industrial gas manufacturing facility in Arizona that develops specialty gasses used in the semiconductor industry. This work involved preparation of air dispersion modeling to demonstrate compliance with State air toxics standards.

Provided support for an electric vehicle manufacturer located in the SF Bay Area. Project work has included NSR and Title V permitting, NSPS and MACT compliance assistance, and environmental compliance auditing.

On behalf of a major oil and gas provider, prepared NSR and Title V permit applications and addressed technical issues related to 30 natural gas compressor stations located throughout the West.

Performed a site-wide air quality compliance audit and assisted in regulatory enforcement negotiations for a digital storage media production facility, including work with State, Local and Federal air quality requirements.

Served as expert on behalf of a wine trade association in a matter before a California Air District Hearing Board. The case involved the appeal of a BACT determination for VOC emissions from wine fermentation tanks.

Served as expert witness regarding air permitting and air quality regulatory compliance on behalf of a geothermal power plant located in California. The case involved the interaction of State and Federal air quality regulations, including interpretation and enforceability of SIP provisions.

Acted as air quality expert in litigation concerning air compliance costs at a coal-fired power plant in Montana. This work included evaluation of feasibility and cost to meet requirements under EPA's Regional Haze, MATS, and PSD programs.

Served as expert witness regarding air permitting and air quality regulatory compliance during an appeal of an air permit issued by Indiana DEM. Work was performed on behalf of a proposed energy production

facility in Indiana, and involved the determination of BACT, applicability of NSPS and MACT rules, and dispersion modeling.

Prepared a permit application for a natural gas-fired power plant expansion located in a residential area in the State of Arizona. This work included analyses required to demonstrate compliance with PSD, nonattainment NSR, and Title V permit requirements for an area with a merged permitting program.

Provided support regarding NSR and Title V permitting for the aircraft engine maintenance facility operated by an international airline, located in the SF Bay Area.

Provided air quality assistance to an international automotive manufacturer in Texas. This work included performance of a comprehensive air compliance audit, assistance with NSPS and MACT compliance, and NSR and Title V permitting.

Served as expert witness regarding air permitting and air quality regulatory compliance on behalf of a proposed metallurgical coke manufacturing facility in Ohio during the appeal of a PSD/Nonattainment NSR permit issued by Ohio EPA. Determinations of BACT and LAER were a particular focus, as well as related compliance demonstration monitoring.

Obtained PSD approval for a cyanide manufacturing facility located in Nevada, including preparation of a BACT analysis, compliance assistance with State and Federal HAP requirements, and dispersion modeling.

Assisted multiple semiconductor fabrication facilities and electronics manufacturers located in California with air quality compliance, including air permitting, health risk assessments, and evaluation of GHG control options for compliance with State and Federal climate change regulations.

On behalf of a major solid oxide fuel cell manufacturer based on the SF Bay Area, performed air permit and CEQA applicability evaluations and obtained air permits for installations located in BAAQMD and around the U.S.

Provided air permitting and compliance assistance to three international pharmaceutical manufacturers with production facilities located in the SF Bay Area. This work included evaluation of PM and VOC air pollution control technologies, as well as air quality compliance for Local, State and Federal regulations.

Prepared the air permit application and negotiated air permit conditions for a hydrogen production plant located at a major oil refinery in the SF Bay Area. This project involved high-level negotiations with multiple stakeholders and presentations at a series of public hearings.

Obtained the first BACT determination in the US, issued by BAAQMD, for a commercial digital inkjet printer on behalf of a leading international digital printing company.

Assisted in preparing Flare Minimization Plans (FMPs) for refineries located in California under Local Air District regulations, as well as one of the first FMPs to be submitted to EPA after adoption of new NSPS Subpart Ja regulations for oil refineries.

Assisted facilities in various industrial sectors regarding GHG compliance, including California and Federal mandatory GHG emissions reporting, third party emissions verification, analysis of GHG BACT, and assistance with pollution controls for high GWP gases.

Prepared a Tribal Minor New Source Review application for a helium extraction plant located in an oil and gas extraction field on the reservation of the Navajo Nation.

For a major bromine manufacturer, performed an assessment of market opportunities created by the Boiler MACT standard imposing stringent limits on mercury emissions from coal-fired boilers.

Provided air permitting and compliance assistance, as well as CEQA impact review and approval, to an international food production and distribution company in siting large-scale commercial meat cooking ovens at a facility in Central California.

Led a team of staff assisting Guam EPA in implementing its Title V air permit program. This work included oversight of staff at Guam EPA reviewing applications and writing permits, as well as providing assistance with Title V rule revisions. As part of this work, traveled to Guam to give a 3-day training on Title V to local regulators and permit applicants.

Led a team of people performing a facility-wide multimedia health risk assessment for an oil refinery in Minnesota. This work included the development of appropriate health risk factors from a database of Federal and State factors, and major revisions to the existing air toxics emissions inventory.

Provided compliance assistance to a polyethylene foam extrusion facility in California, including assessing pollution control options, evaluating offset requirements, and performing a health risk assessment. This work required extensive negotiations with federal and local regulators.

Prepared PSD permit applications for the expansion of aluminum smelters located in Washington state and in Maryland. Extensive coordination was required for each of these projects between multiple stakeholders, including state and federal government agencies, non-government organizations, and representatives from the Canadian government.

Performed an assessment of air quality and climate change impacts, including associated mitigation measures, under the California Environmental Quality Act (CEQA) for a zoo expansion in Northern California.

Provided litigation support to an oil refinery in Louisiana related to emergency releases over a period of several decades, and related to impacts on the surrounding community due to a fire at the plant.

Obtained a PSD permit for the installation of continuous casting operations at a steel mill in Alabama, including preparation of a BACT analysis and of all required dispersion modeling. Follow-on work included preparation of a Title V permit and assistance with ongoing compliance and annual emissions calculations.

Prepared an application for the renewal of a Title V permit for a steel mill located in Mississippi, including the development of a Compliance Assurance Monitoring (CAM) plan for the facility.

Assisted in the development of a PM10 attainment plan for Imperial County APCD for approval into the California State Implementation Plan. This work included the preparation of regional air quality modeling using USEPA-approved dispersion modeling (CALPUFF). This work also included an area-specific analysis of possible control measures for technical and economic feasibility.

Provided assistance to a glass plant in California during settlement discussions with state and federal regulators. This work included assisting in preparation of a BACT analysis, as well as evaluating costs, control requirements, and offset liabilities under various scenarios.

Prepared all required analyses for a geothermal development project on behalf of a permitting agency in Northern California. These analyses evaluated applicability of local, state, and federal regulations, appropriateness of pollution controls, modeling to determine ambient impacts, and an assessment of health risks.